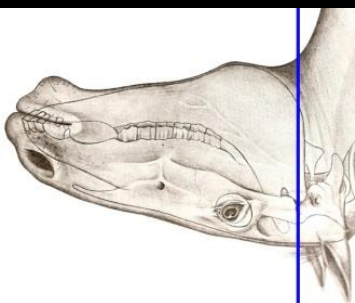
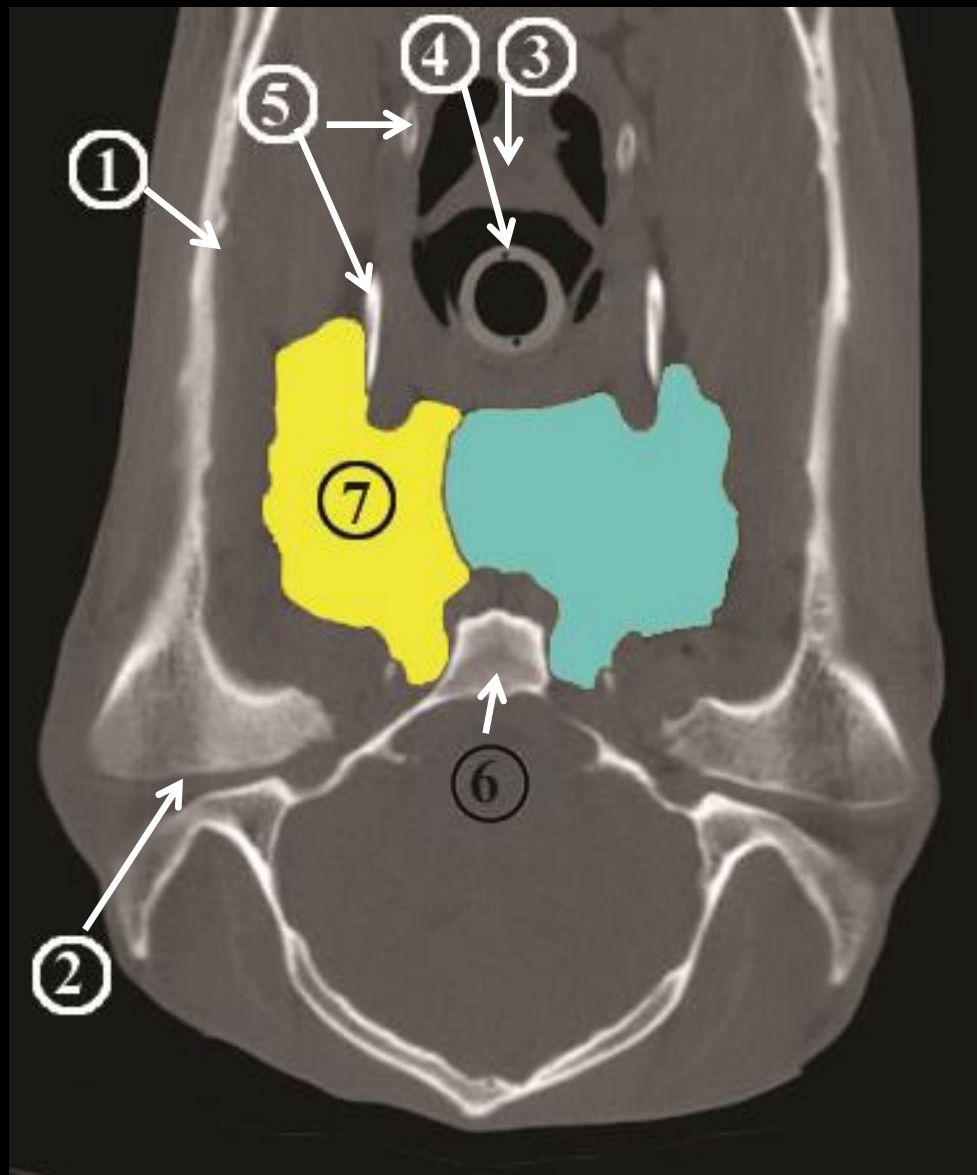
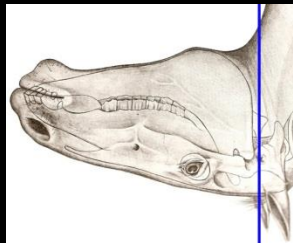
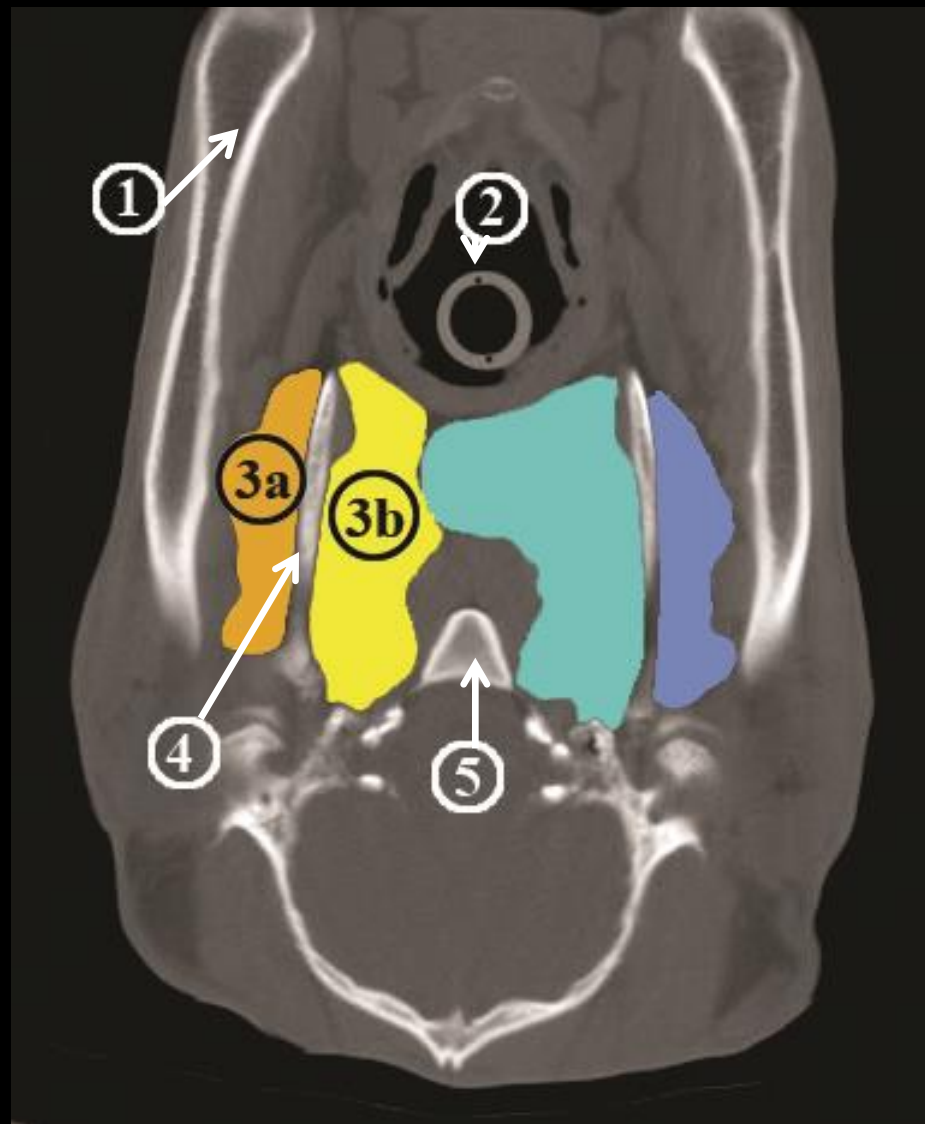


(1) Mandible, (2) arcus zygomaticus, (3) os hyoideum, (4) intubation tube, (5) Ostium pharyngeum tubae auditivae sin.

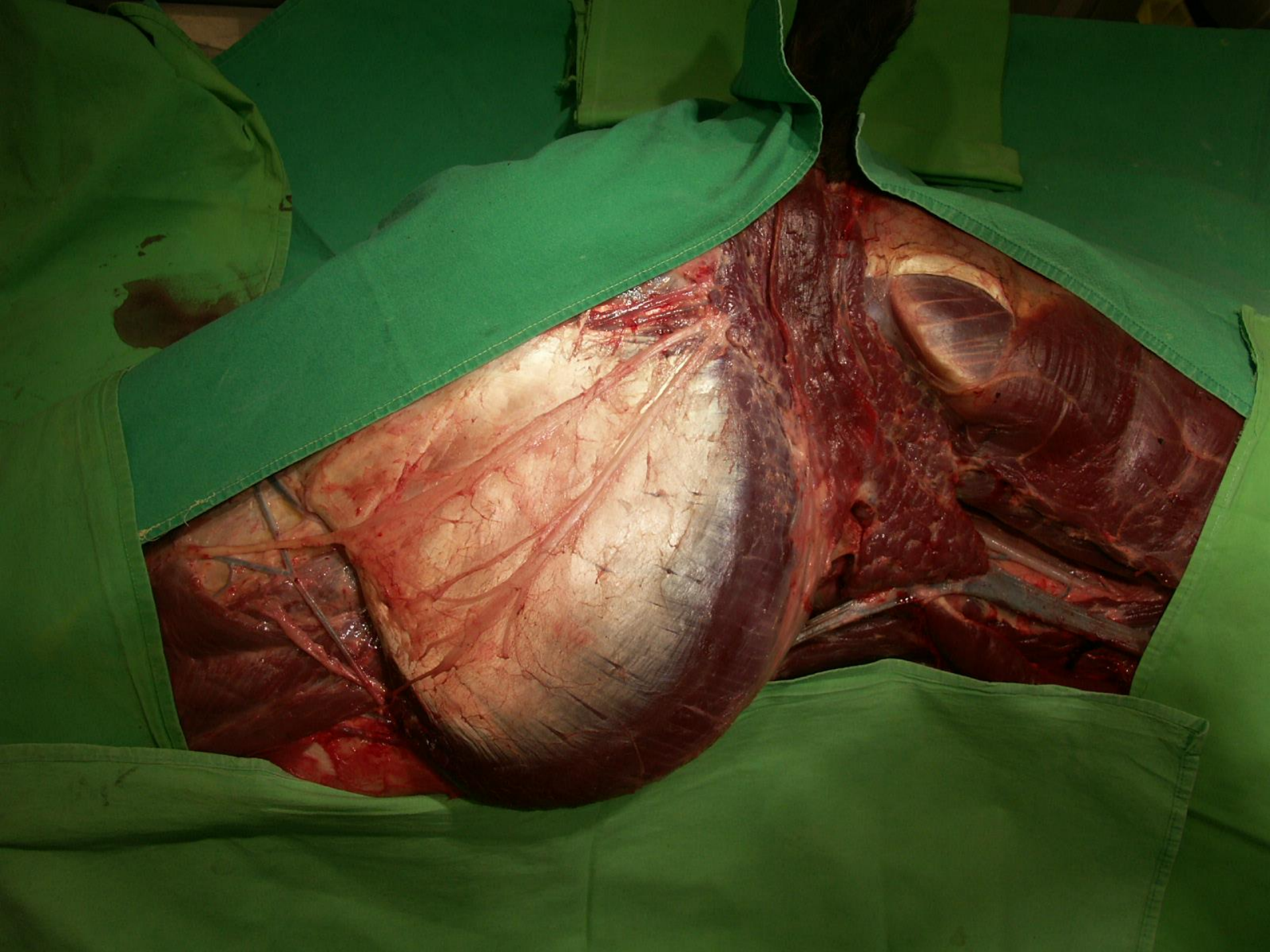


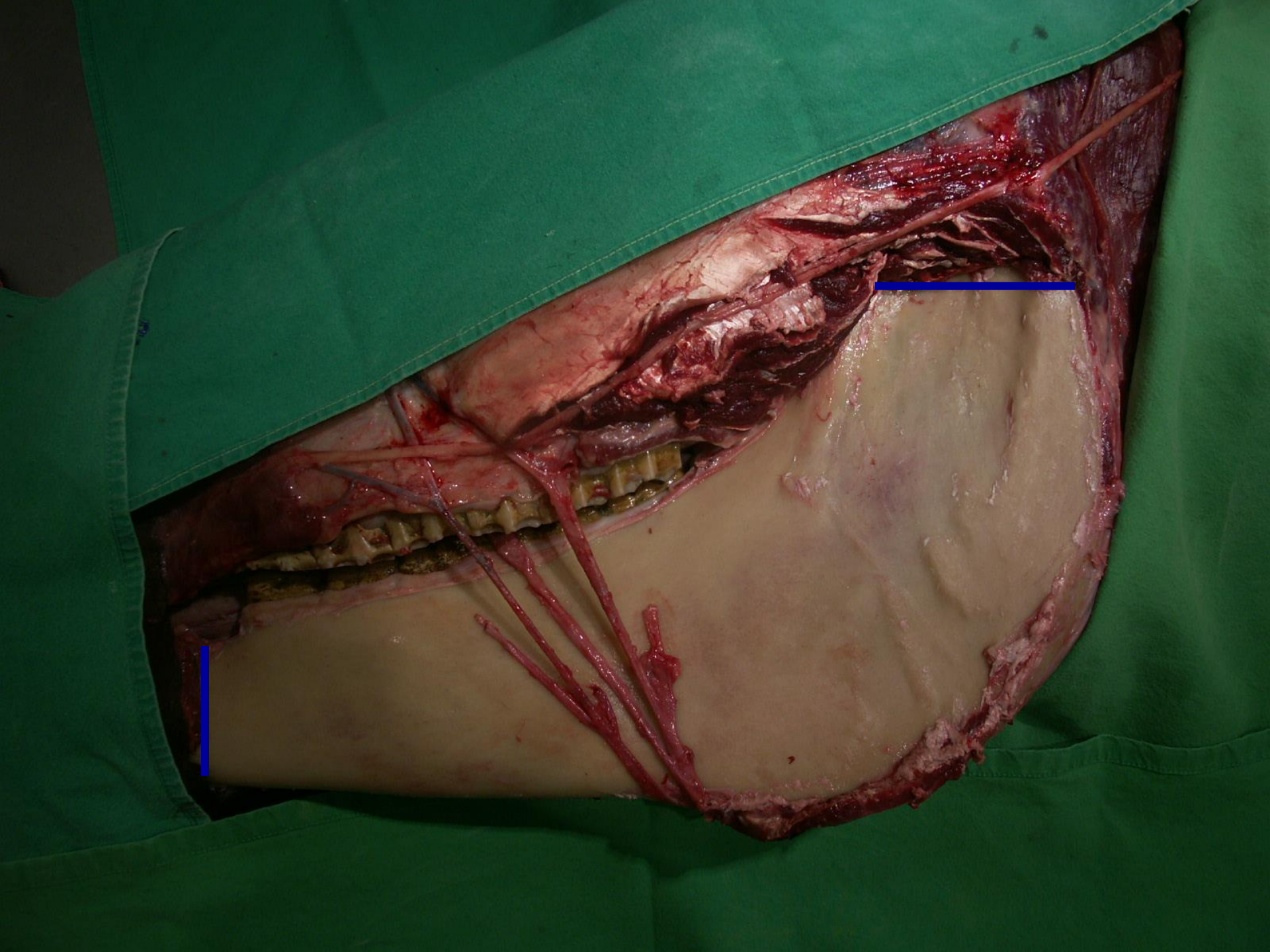
(1) Mandible, (2) art. temporomanibularis, (3) epiglottis, (4) intubation tube, (5) os hyoideum, (6) os basisphenoidale, (7) diverticulum tubae auditivae sin.



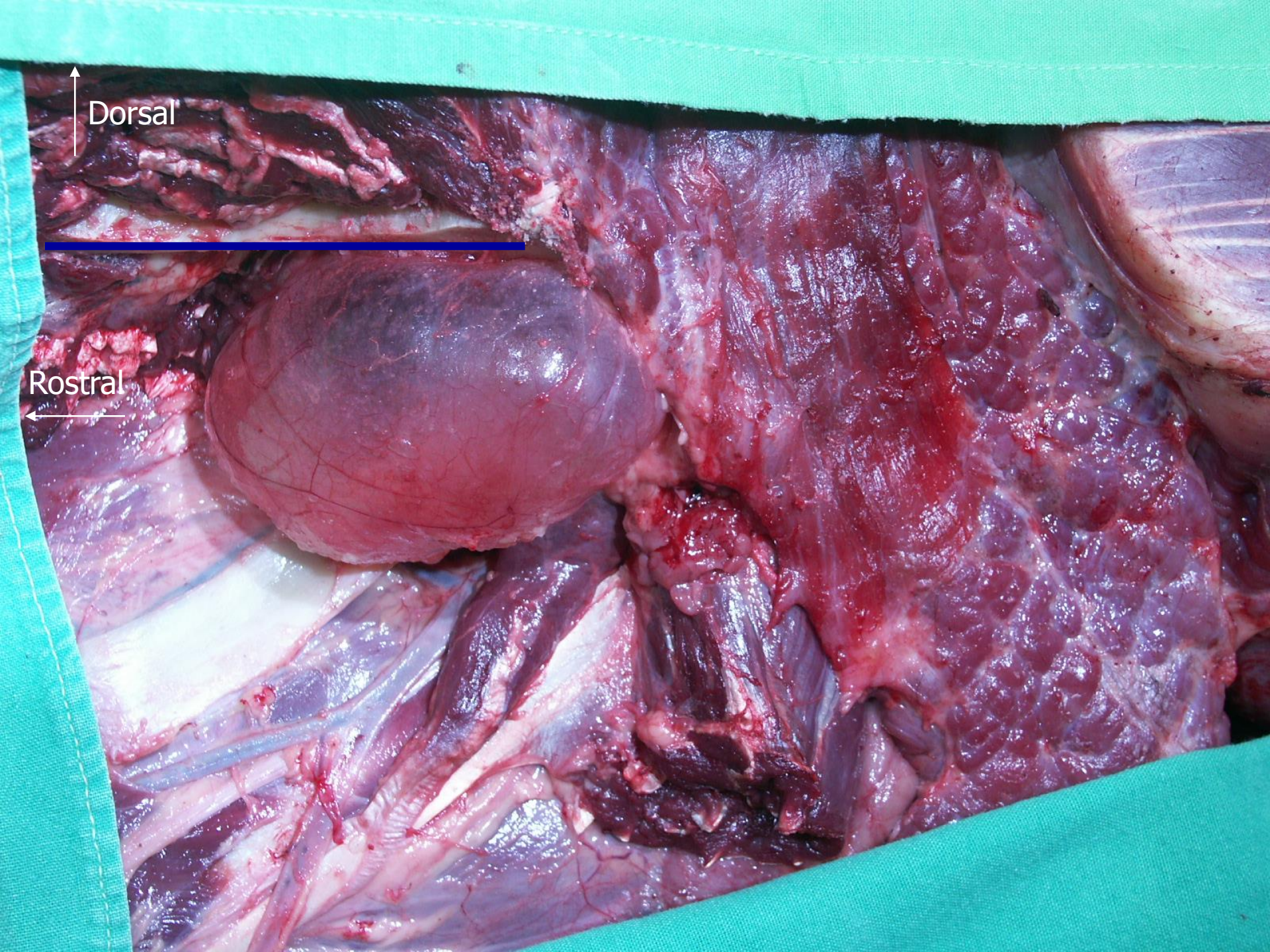
(1) Mandible, (2) intubation tube, (3a) rec. lateralis div. tubae auditivae sin., (3b) rec. medialis div. tubae auditivae sin., (4) os hyoideum, (5) os basisphenoidale











Dorsal

Rostral

(1) *discus art. temporo-mandibularis*

(2) *stylohyoideum*

(3) *ala atlantis*

(4) *m. obliquus capitis cran.*

(5) *pharynx*

(6) *m. digastricus*

(7) *m. occipitohyoideus*

(8a) *diverticulum tubae auditivae, rec.lateralis*

(8b) *diverticulum tubae auditivae, rec.medialis*

(9) *sinus caroticus*

(10) *a. carotis externa*

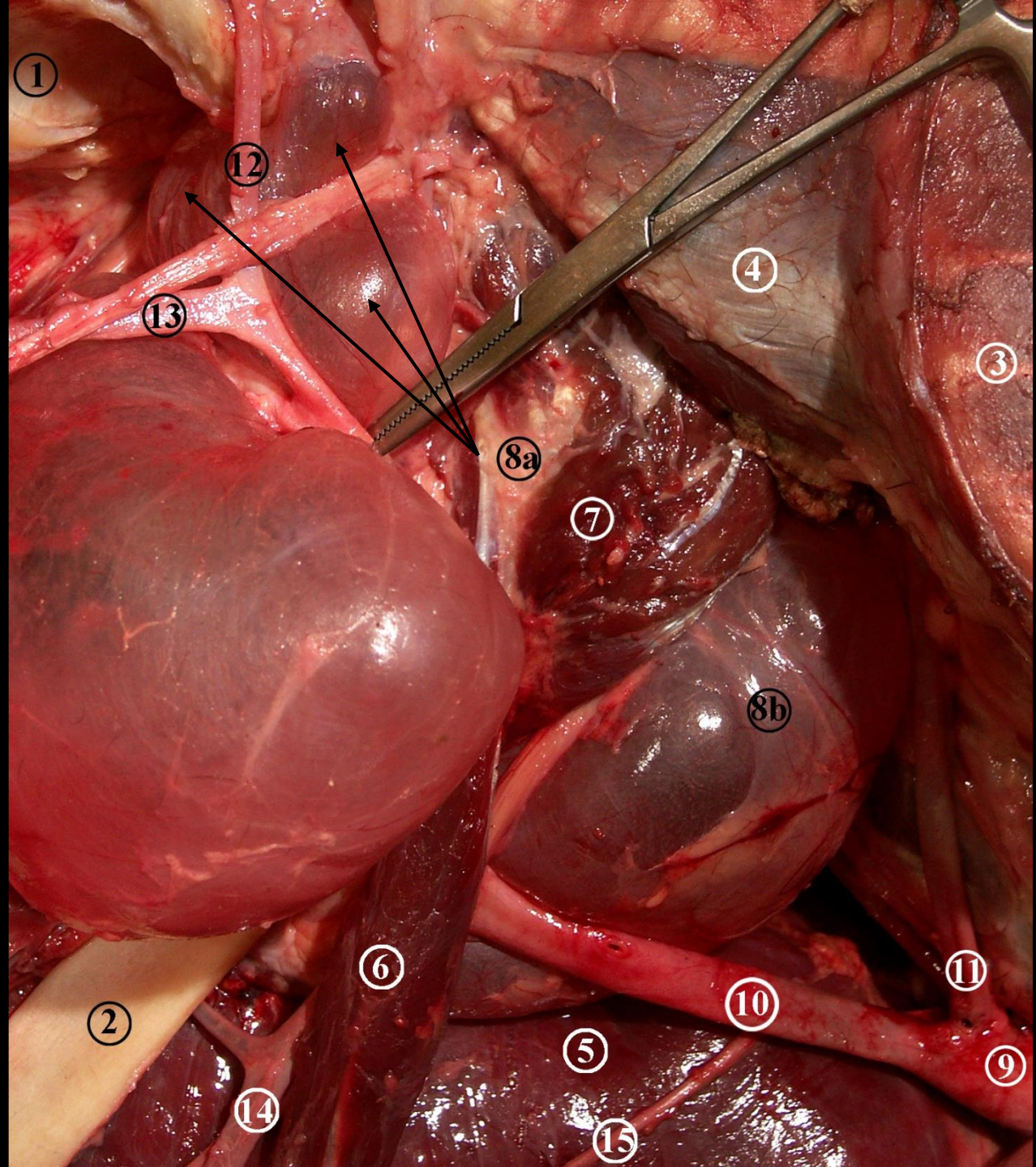
(11) *a. occipitalis*

(12) *a. temporalis sf.*

(13) *a. maxillaris*

(14) *tr. linguofacialis*

(15) *n. laryngeus cranialis, r. internus*



(1) discus art.  
temporomandibularis

(2) stylohyoideum

(3) ala atlantis

(4) m. obliquus capitis cran.

(5) pharynx

(6) m. digastricus

(7a) diverticulum tubae auditivae,  
rec. lateralis

(7b) diverticulum tubae auditivae,  
rec. medialis

(8) a. carotis interna

(9) a. carotis externa

(10) a. occipitalis

(11) a. temporalis sf.

(12) a. maxillaris

(13) tr. linguofacialis

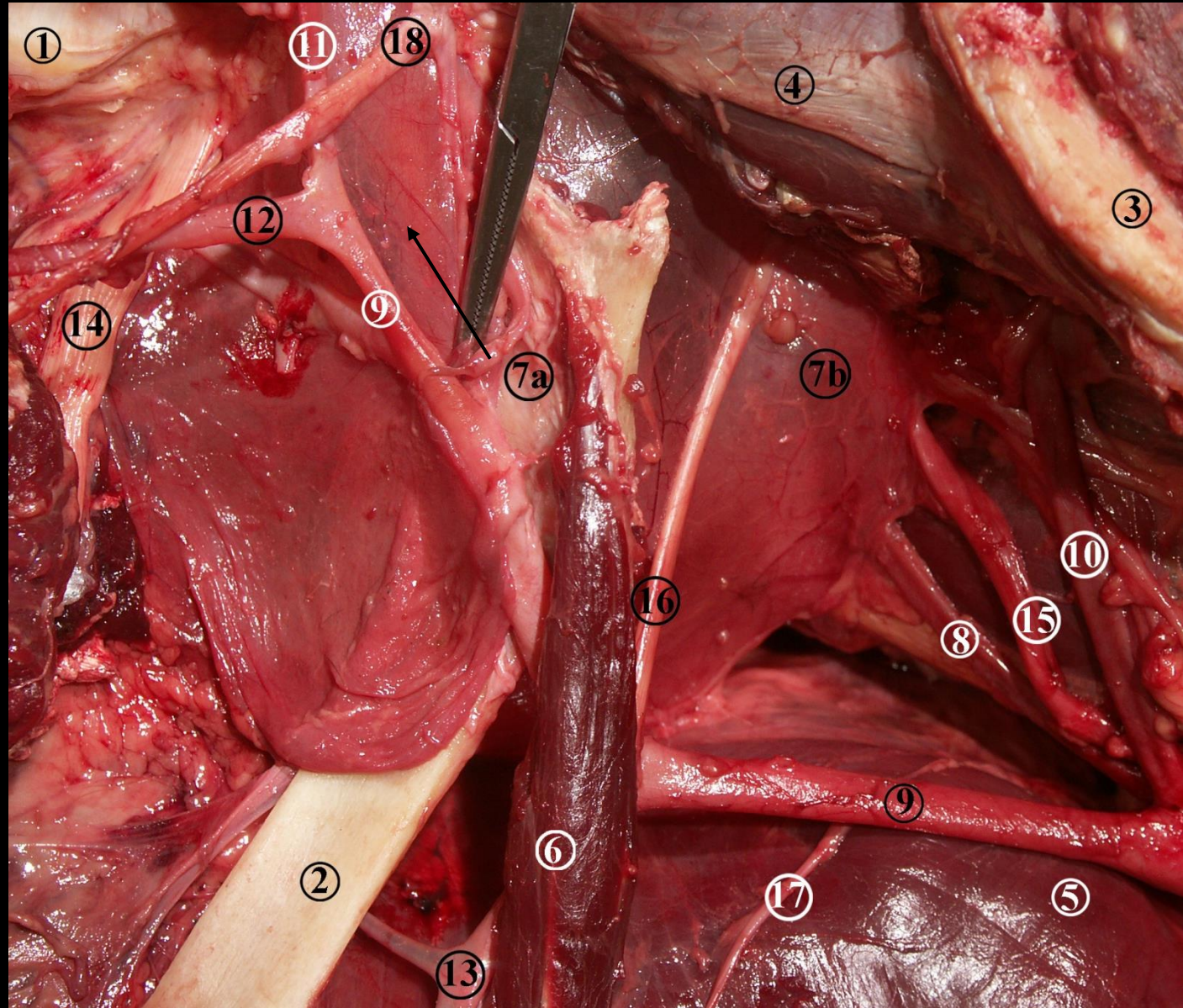
(14) n. facialis

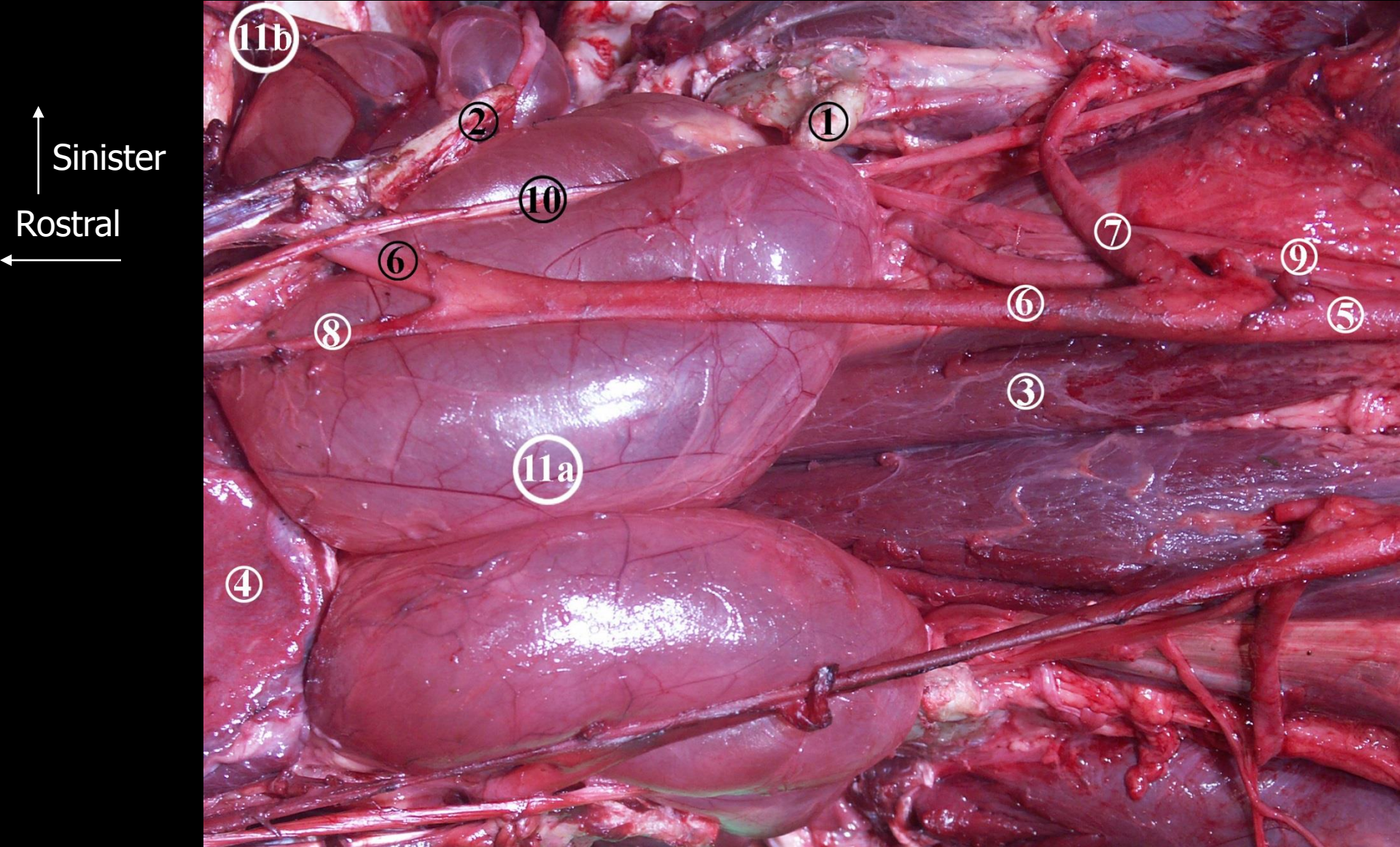
(15) tr. vagosympathicus

(16) n. hypoglossus

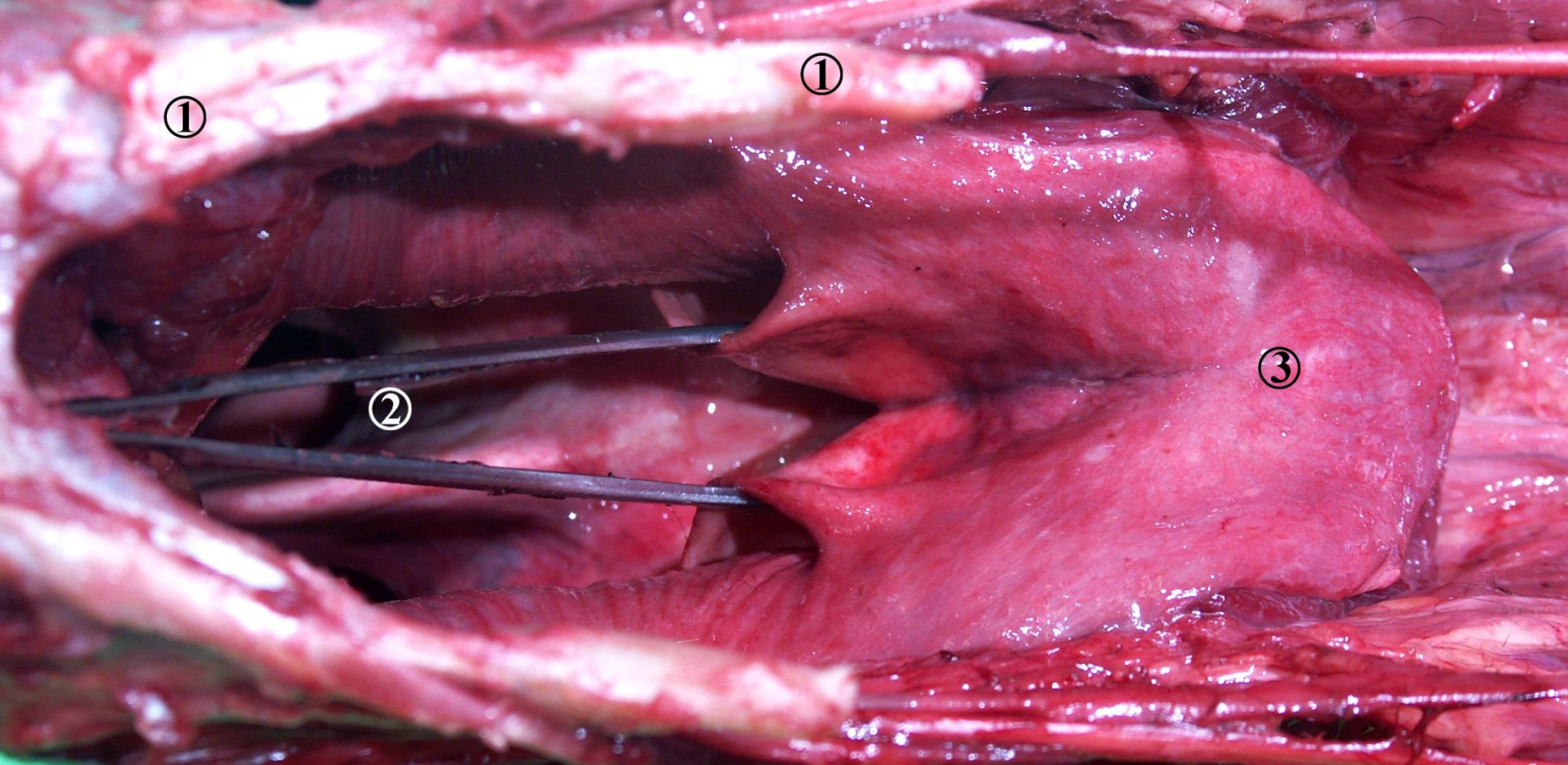
(17) n. laryngeus cranialis, r.  
internus

(18) r. transversus faciei

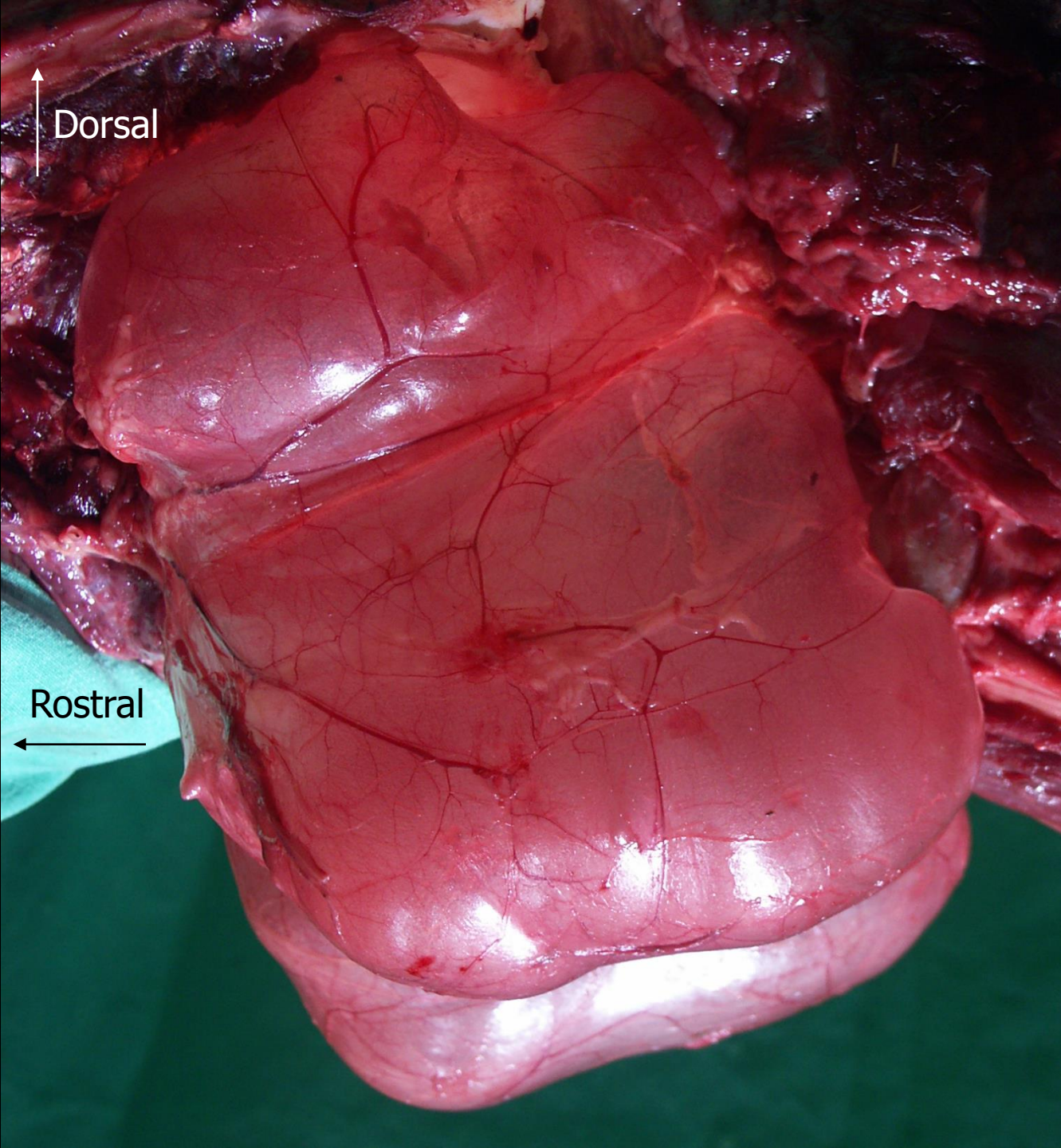




(1) *proc. paracondylaris*, (2) *angulus stylohyoideus*, (3) *m. longus capitis*, (4) *pars nasalis pharyngis*, (5) *a. carotis communis*, (6) *a. carotis externa*, (7) *a. occipitalis*, (8) *tr. linguofacialis*, (9) *tr. vago-sympaticus*, (10) *n. hypoglossus*, (11a) *diverticulum tubae auditivae, sin. medialis* (11b) *diverticulum tubae auditivae, sin. lateralis*



*(1) os hyoideum, (2) septum nasi, (3) pars nasalis pharyngis*



Dorsal

Rostral

