

INTESTINUM TENUE

Duodenum

1. Pars cranialis
2. Flexura duodeni cranialis
3. Pars descendens
4. Papilla duodeni major (for ductus pancreaticus=ductus pancreaticus major, ductus choledochus)
5. Papilla duodeni minor (for ductus pancreaticus accessorius=ductus pancreaticus minor)
6. Flexura duodeni caudalis

7. Pars transversa

8. Pars ascendens

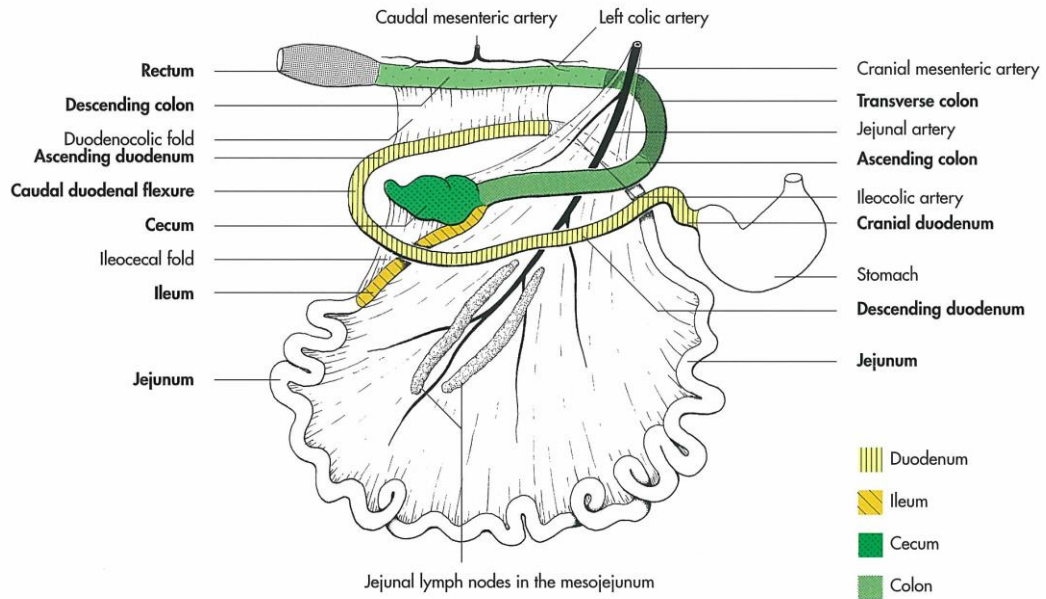
9. Flexura duodenojejunalis

10. Plica duodenocolica-between duodenum ascendens-colon descendens

11. Jejunum

12. Ileum

13. Ostium ileale
- Papilla ilealis -annular fold
- M. sphincter ilei -muscular ring



INTESTINUM CRASSUM

14. Caecum

15. Ostium caecocolicum
- M. sphincter caeci
16. Plica ileocaecale
17. Plica caecocolica -very small

Colon

18. Colon ascendens
19. Colon transversum
20. Colon descendens

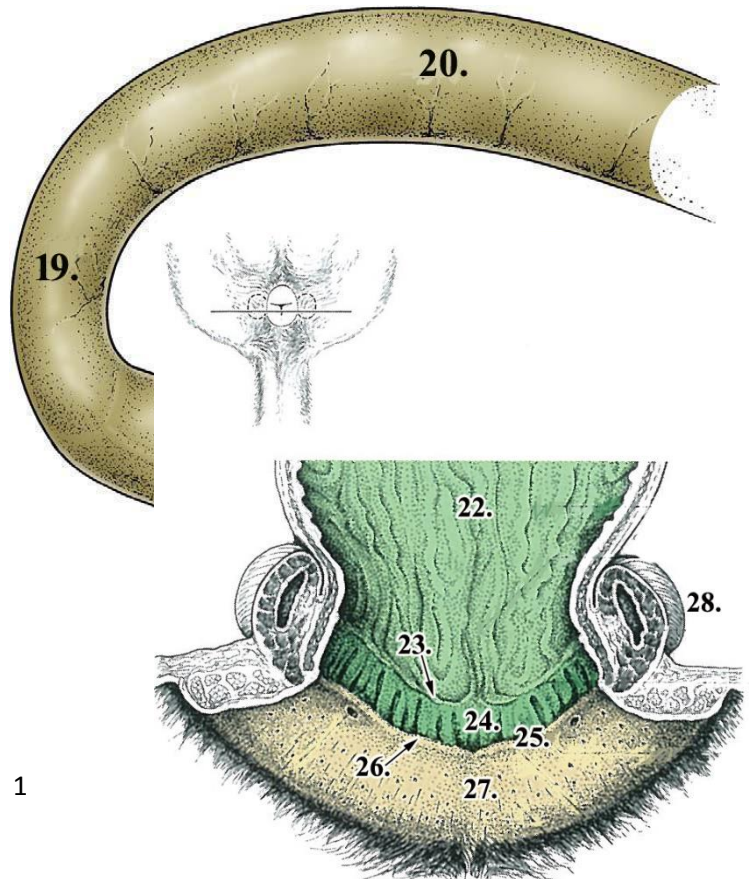
Mesocolon

21. Rectum

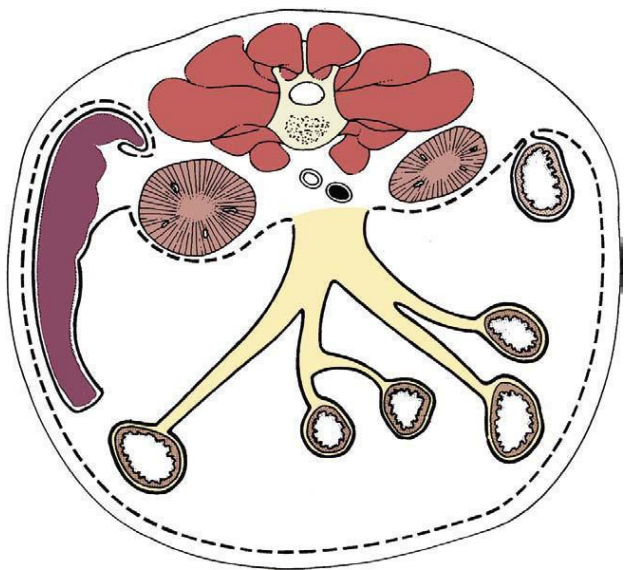
22. Ampulla recti

Canalis analis

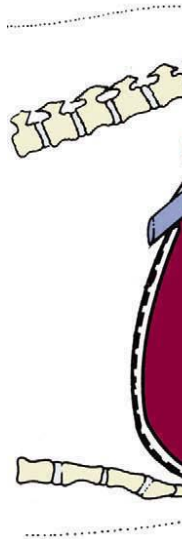
23. Linea anorectalis
24. Zona columnaris ani (only ca, su)



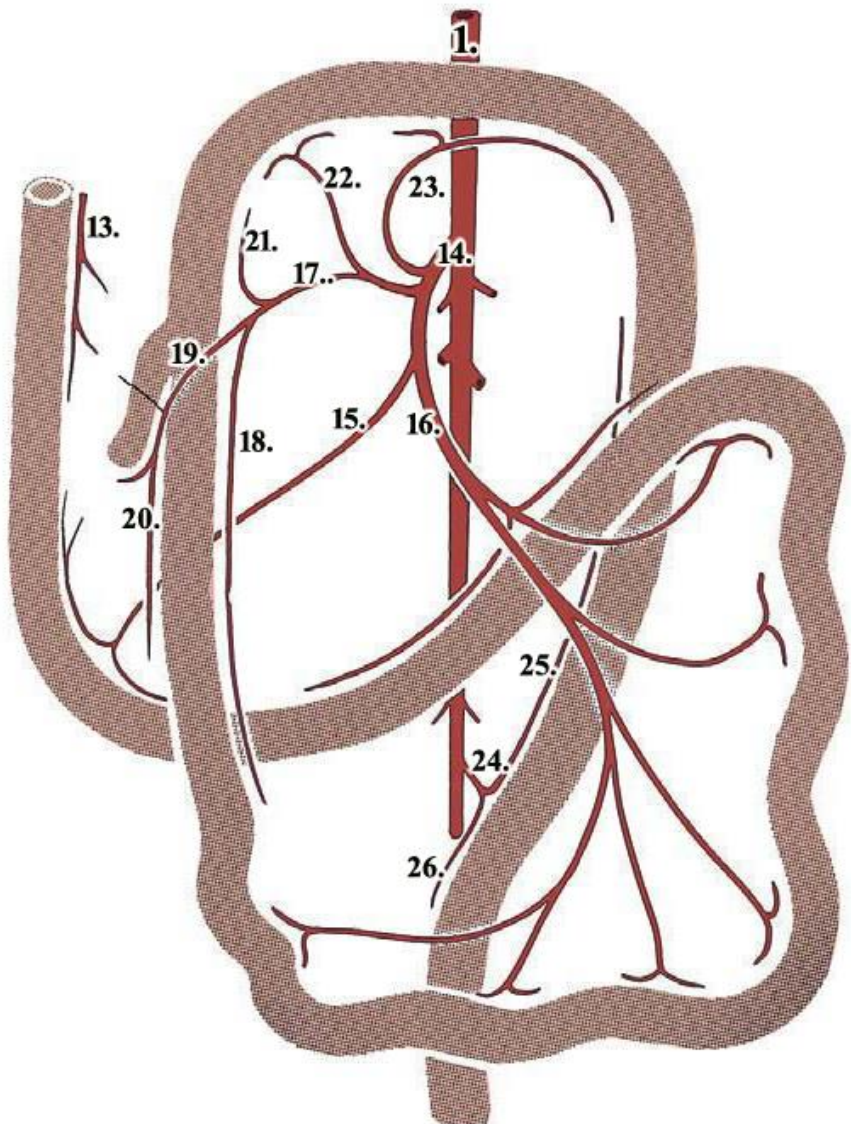
- Columnae anales
 - Sinus anales
 - Gll. anales
 - 25. Zona intermedia
 - 26. Linea anocutanea
 - 27. Zona cutanea
 - Gll. circumanales (**only ca**)
 - 28. Sinus paranalisis (**only ca**)-2 anal sacs between the two sphincter muscles
 - Gll. sinus paranalisis
 - 29. M. sphincter ani internus
 - 30. M. sphincter ani externus
 - 31. M. levator ani (origin: pelvis, insertion: 3-7 caudal vertebrae)
 - 32. M. coccygeus (origin: spina ischiadica, insertion: 2-5 caudal vertebrae)
- Anus



Mesoileum
 Mesocecum
 Mesocolon
 Mesorectum



PERITONEUM
Peritoneum parietale
Peritoneum viscerale
Mesenterium
 Radix meseterii
 Mesoduodenum
 Mesojejenum



- 1. AORTA ABDOMINALIS
- 2. A. coeliaca

- 3. A. lienalis
 - 4. Rami pancreatici
 - 5. Aa. gastricae breves
 - 6. A. gastroepiploica sinistra
- 7. A. gastrica sinistra
 - 8. Rami oesophagei
- 9. A hepatica
 - 10. A. gastrica dextra
 - 11. A. gastroduodenalis
 - 12. A. gastroepiploica dextra
 - 13. A. pancreaticoduodenalis cranialis

14. A. mesenterica cranialis

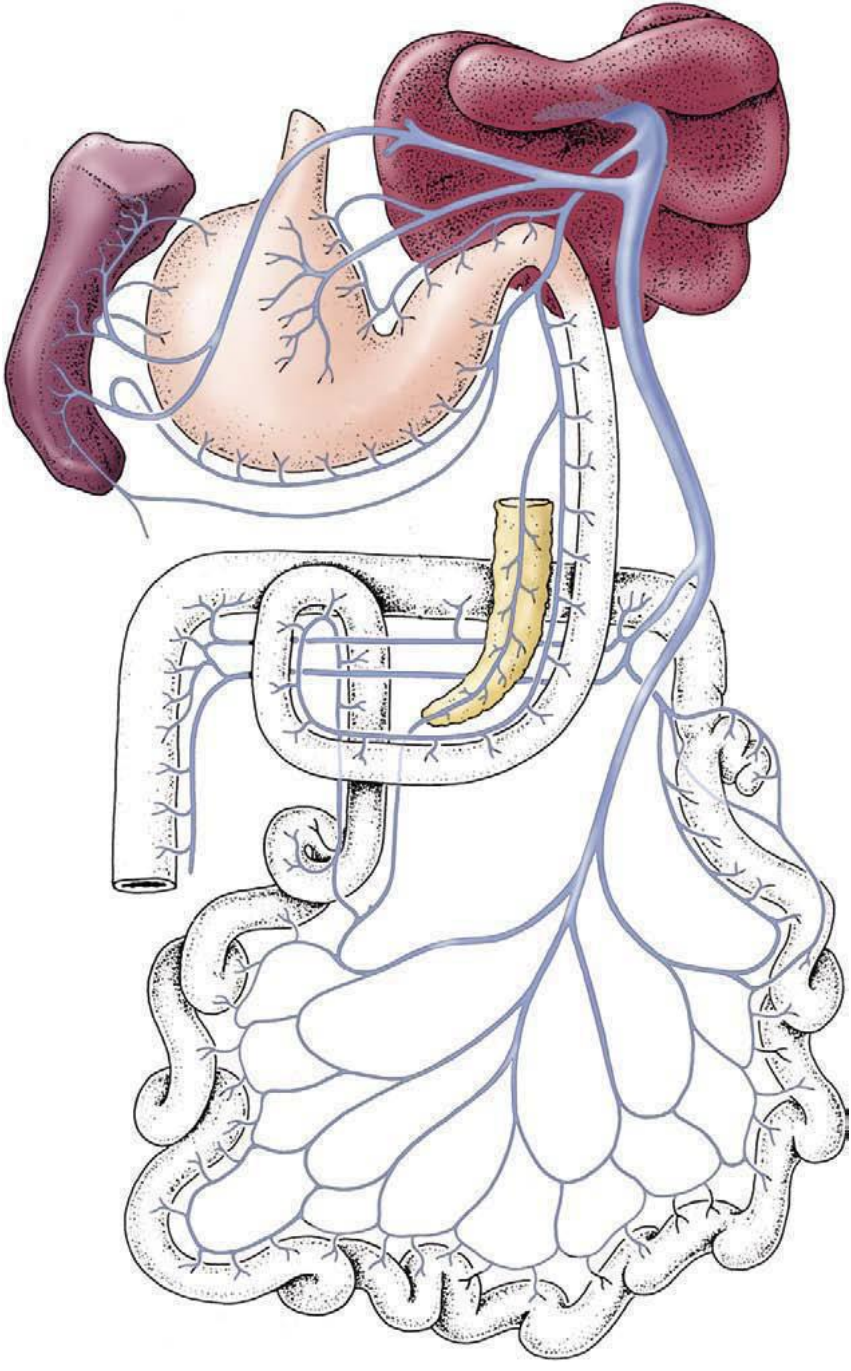
- 15. A. pancreaticoduodenalis caudalis
- 16. Aa. jejunales
- 17. A. ileocolica
 - 18. Ramus ilei mesenterialis
 - 19. A. caecalis
 - 20. R. ilei antimesenterialis
 - 21. Ramus colicus (supplies initial segment of colon ascendens)
 - 22. A. colica dextra (supplies terminal segment of colon ascendens)
 - 23. A. colica media (supplies colon transversus, initial segment of colon descendens)

24. A. mesenterica caudalis

- 25. A. colica sinistra
- 26. A. rectalis cranialis

A. ILIACA INTERNA

- A. glutea caudalis
- A. pudenda interna
 - A. rectalis media
 - A. rectalis caudalis (ex. a. perinealis ventralis)



VENA PORTAE

- V. gastrica dextra
- V. gastroduodenalis
 - V. gastroepiploica dextra
 - V. pancreaticoduodenalis cranialis

V. lienalis

- V. gastrica sinistra
- V. gastroepiploica sinistra

Vena mesenterica cranialis

- V. pancreaticoduodenalis caudalis
- Vv. jejunales
- V. ileocolica
 - R. colicus
 - V. caecalis
- V. colica dextra
- V. colica sinistra

Vena mesenterica caudalis

- V. colica sinistra

V. rectalis cranialis

VENA CAVA CAUDALIS

Vena iliaca interna

- Vena rectalis media (to v. vaginalis/ v. prostatica first)
- Vena rectalis caudalis (to v. perinealis ventralis and to v. pudenda interna first)

HORSE

1. Duodenum

2. Ampulla duodeni
3. Ansa sigmoidea
4. Papilla duodeni major (for ductus pancreaticus, ductus choledochus)
5. Papilla duodeni minor (for ductus pancreaticus accessorius)
- (6. Anulus pancreatis of pancreas- for vena portae)

7. Jejunum

8. Ileum

Caecum 30-50 liter

9. Basis caeci
 10. Corpus caeci
 11. Apex caeci
 12. Curvatura caeci major -ventral
 13. Curvatura caeci minor -dorsal
- Teniae caeci- 4 longitudinal muscular bands

- Tenia dorsalis
- Tenia ventralis
- Tenia medialis (tenia vasculosa)
- Tenia lateralis (tenia vasculosa)

Haustra caeci- sacculation between teniae

Ostium ileale (inside basis caeci)

Papilla ilealis

M. sphincter ilei –missing, wall of the ileum is stronger and acts like a sphinter+venous plexus

Ostium caecocolicum (inside basis caeci)

M. sphincter caeci- missing

Valva caecocolica (**only eq**)

Plica ileocaecale- between tenia dorsale caeci (curvatura caeci minor) and ileum (antimesenteric part)

Plica caecocolicum- between tenia libera laterale of colon ventrale dextra and tenia laterale caeci

Colon 120 liter

Colon ascendens [Colon crassum]

14. Colon ventrale dextrum- (4 teniae) tenia libera med, lat, tenia mesocolica med, lat
15. Flexura sternalis [=flexura diaphragmatica ventralis]
16. Colon ventrale sinistrum- (4 teniae) tenia libera med, lat, tenia mesocolica med, lat
17. Flexura pelvina
18. Colon dorsale sinistrum- (1 tenia) tenia mesocolica
19. Flexura diaphragmatica [=flexura diaphragmatica dorsalis]
20. Colon dorsale dextrum - (3 teniae) tenia libera mediale, laterale, tenia mesocolica
21. Ampulla coli- (3 teniae)

22. Colon transversum

23. Colon descendens [Colon tenue]- (2 teniae) tenia libera, tenia mesocolica

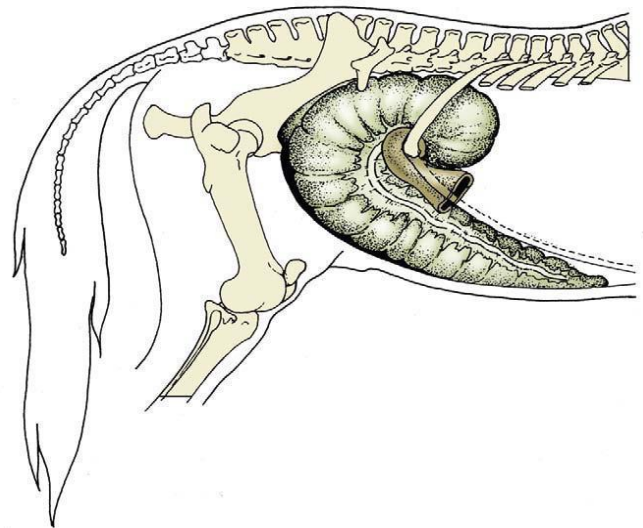
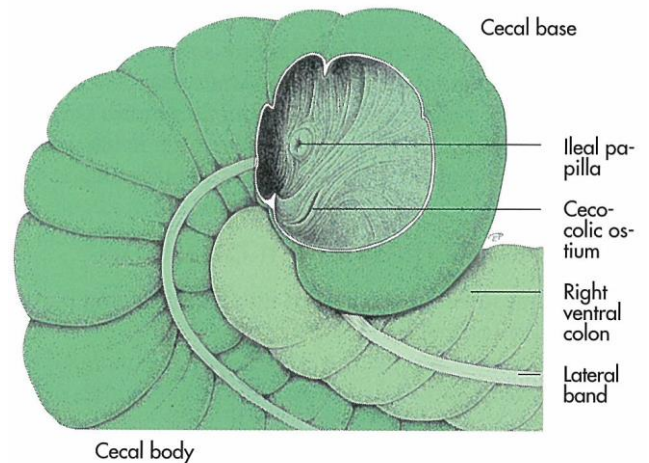
Teniae coli

Haustra coli

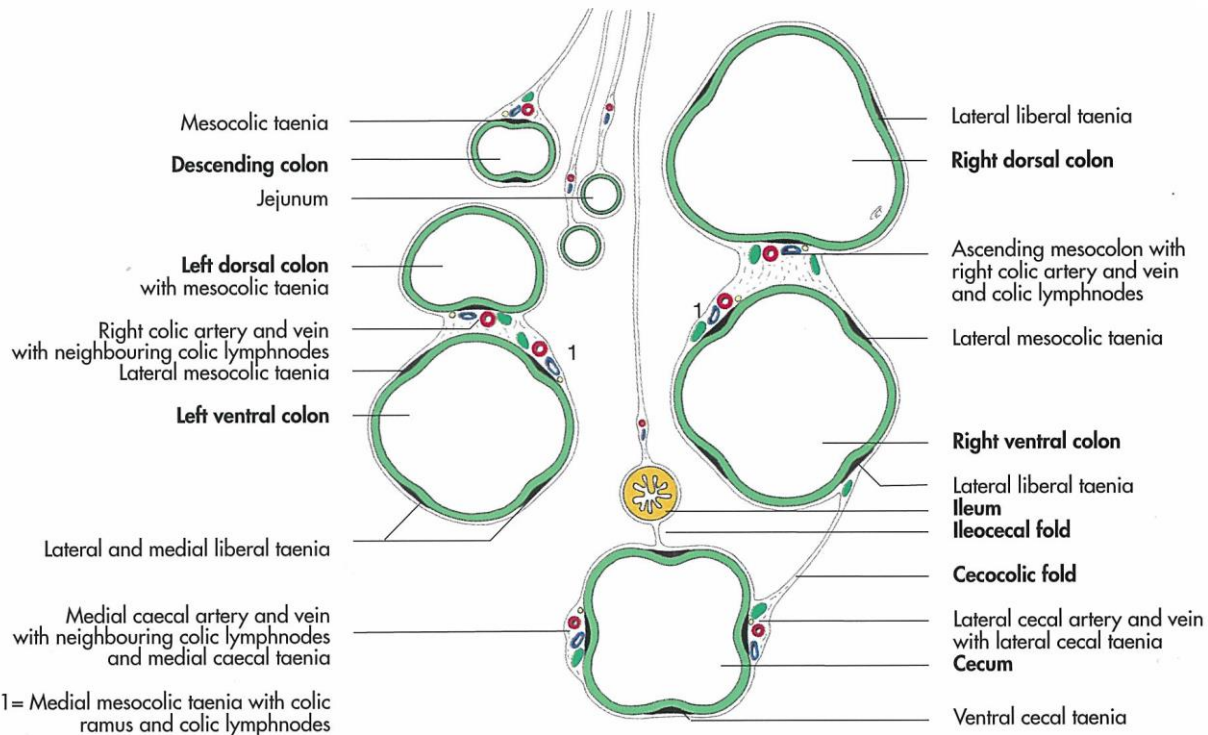
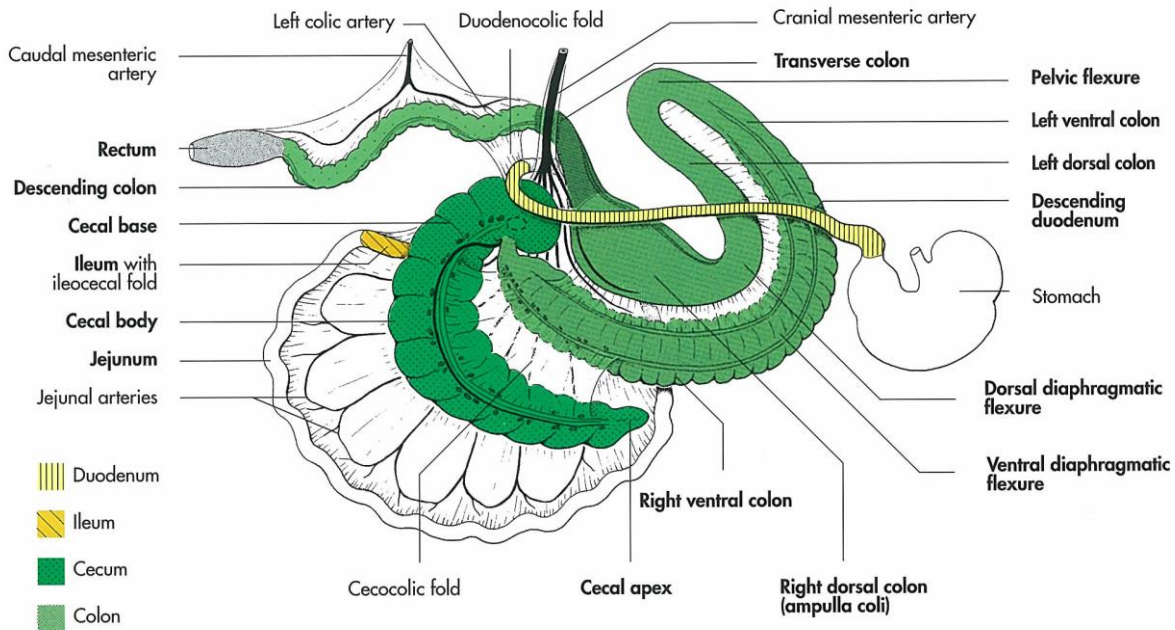
Lig. intercolicum

Rectum

Canalis analis



https://www.youtube.com/watch?v=fdz78HU_fkM
<https://www.youtube.com/watch?v=ZY3wGvYQnvE&t=312s>
https://www.youtube.com/watch?v=FnohbE_CVMw
https://www.youtube.com/watch?v=aM-ErH_Psz0&fbclid=IwAR12AEhkBgak_iLOir5wXcgKZbiXID8p7MN5ybVYexuuMN1kv2gkVvUysWY



Blood supply eq

A. pancreaticoduodenalis cranialis (ex. a. hepatica ex. a. coeliaca)

A. mesenterica cranialis

A. pancreaticoduodenalis caudalis

Aa. jejunales

A. ileocolica

Ramus ilei mesenterialis

Ramus ilei antimesenterialis is missing

A. caecalis lateralis (along tenia lateralis caeci)

A. caecalis medialis (along tenia medialis caeci)

Ramus colicus=a. colica ventralis (supplies colon ventrale dextrum, flexura sternalis, colon ventrale sinistrum, flexura pelvina)

A. colica dextra=a. colica dorsalis (supplies flexura pelvina, colon dorsale sinistrum, flexura diaphragmatica, colon dorsale dextrum, ampulla coli)

A. colica media (supplies colon transversum)

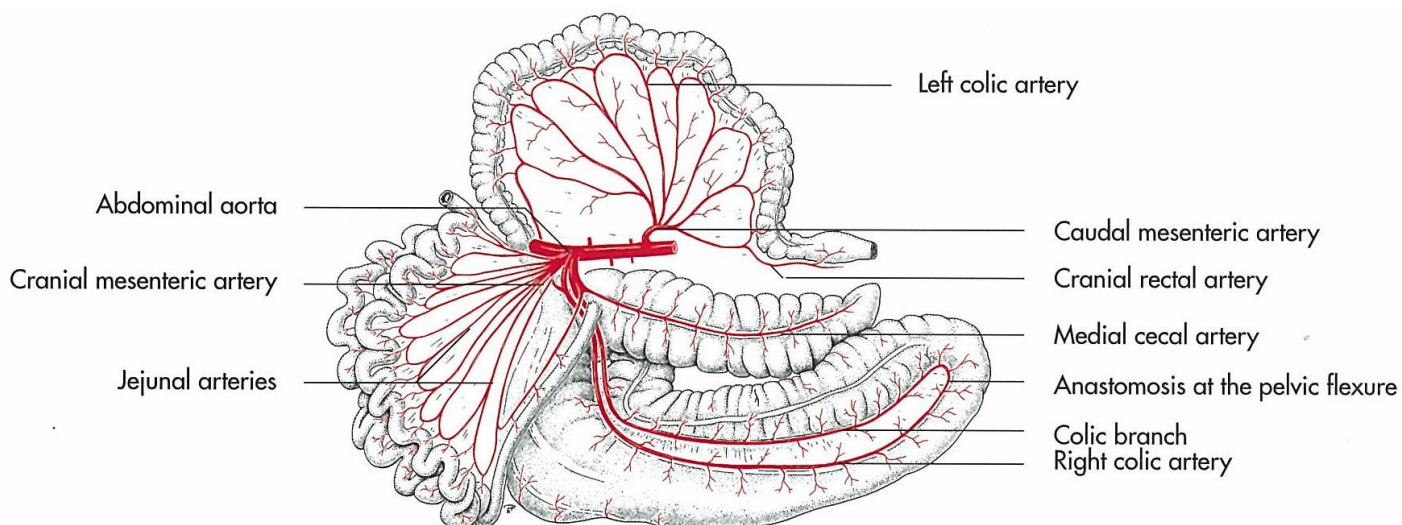
A. mesenterica caudalis

A. colica sinistra (supplies colon descendens=colon tenue)

A. rectalis cranialis

A. rectalis media (ex. pudenda externa, ex. iliaca interna)

A. rectalis caudalis (ex. iliaca interna, ex. pudenda externa, ex. a. perinealis ventralis)



RUMINANT

No teniae/no haustra for any intestine!

1. Duodenum

2. Ansa sigmoidea
3. Papilla duodeni major (only for ductus choledochus)
4. Papilla duodeni minor (for ductus pancreaticus accessorius)

5. Jejunum

6. Ileum

Caecum

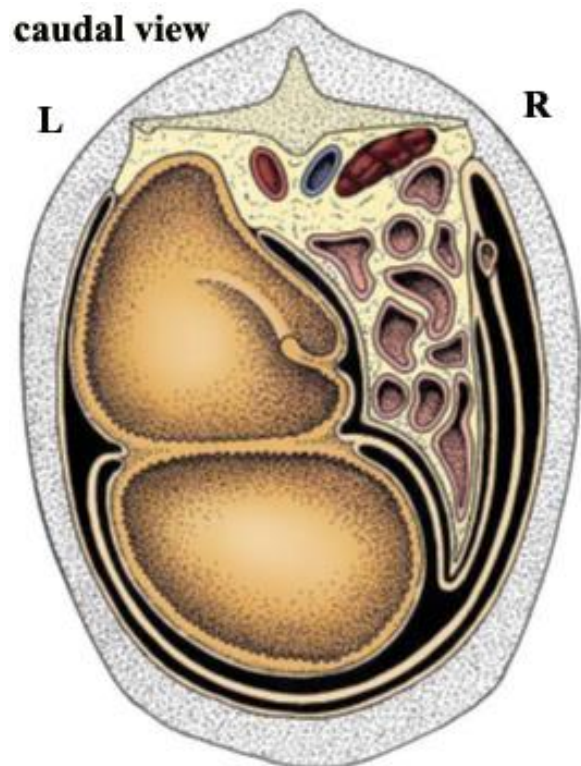
Colon

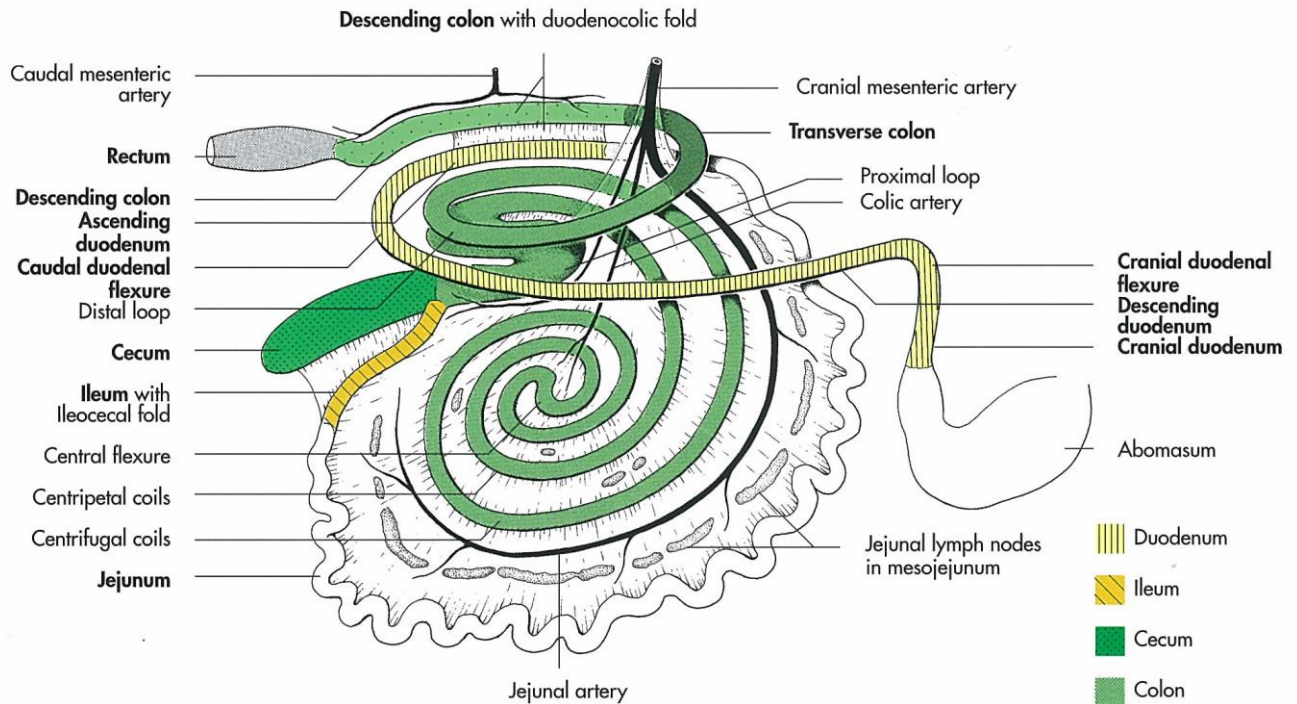
Colon ascendens

7. Ansa proximalis coli
8. Ansa spiralis coli
 9. Gyri centripetales
 10. Flexura centralis
 11. Gyri centrifugales
12. Ansa distalis coli
13. Colon transversum
14. Colon descendens
15. Colon sigmoideum (only bo)

Rectum

Canalis analis





Blood supply ru

A. pancreaticoduodenalis cranialis (ex. a. hepatica, ex. a. coeliaca)

A. mesenterica cranialis

A. pancreaticoduodenalis caudalis

Aa. jejunales

A. ileocolica

A. ilei mesenterialis

A caecalis

Ramus ilei antimesenterialis is present.

Rami colici (**supplies ansa proximalis, gyri centripetales**)

A. colicae dextrae (**supplies gyri centrifugales, ansa distalis**)

A. colica media (**supplies colon transversum, initial segment of colon descendens**)

A. mesenterica caudalis

A. colica sinistra (**supplies colon descendens**)

A. rectalis cranialis

A. rectalis media (ex. pudenda externa, ex. iliaca interna)

A. rectalis caudalis (ex. iliaca interna, ex. pudenda externa, ex. a. perinealis ventralis)

SWINE

1. Duodenum

2. Papilla duodeni major (only for ductus choledochus)
3. Papilla duodeni minor (for ductus pancreaticus accessorius)
- (4. Anulus pancreatis)

5. Jejunum

6. Ileum

7. Caecum

Teniae caeci (3 teniae)

Tenia ventralis (attachment of lig. ileocaecale)

Tenia medialis

Tenia lateralis

Haustra caeci

Colon

Colon ascendens

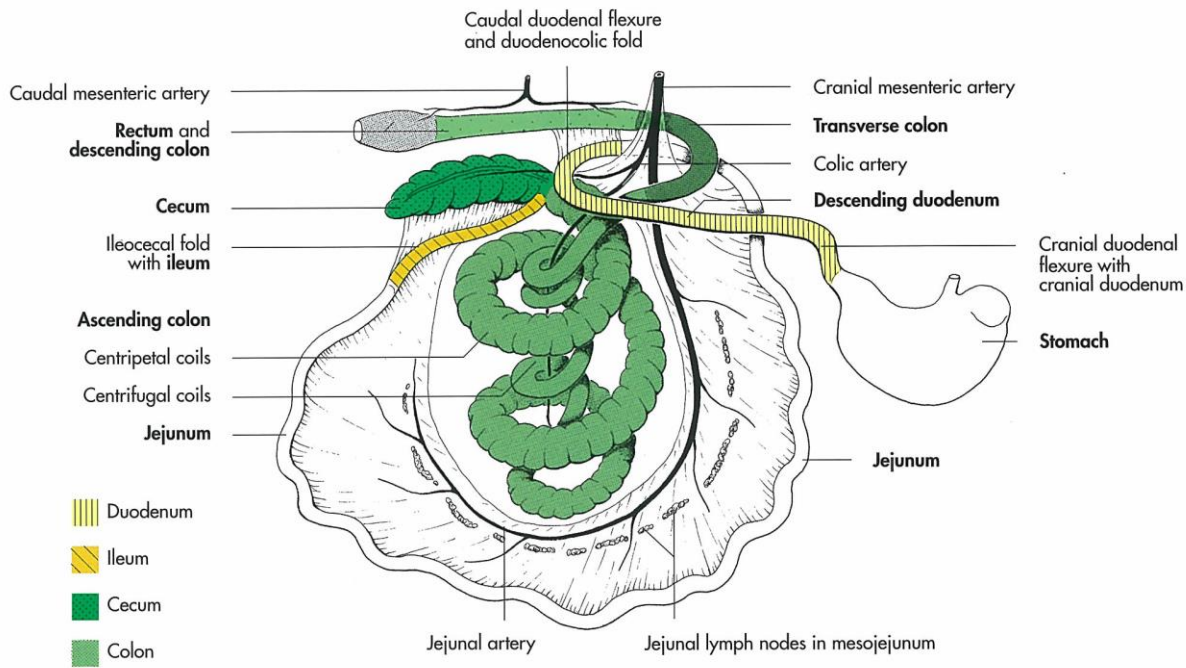
8. Ansa spiralis coli
9. Gyri centripetales
 - Teniae coli (2 teniae)
 - Haustra coli
10. Flexura centralis
11. Gyri centrifugales
12. Ansa distalis coli

13. Colon transversum

14. Colon descendens

Rectum

Canalis analis



Blood supply su

A. pancreaticoduodenalis cranialis (ex. a. hepatica ex. a. coeliaca)

A. mesenterica cranialis

A. pancreaticoduodenalis caudalis

Aa. jejunales

A. ileocolica

Ramus ilei mesenterialis

A caecalis

Ramus ilei antimesenterialis is missing

Ramus colicus (**gyri centripetales**)

A. colica dextra (**supplies gyri centrifugales, ansa distalis**)

A. colica media (**supplies colon transversum**)

A. mesenterica caudalis

A. colica sinistra (**supplies colon descendens**)

A. rectalis cranialis

A. rectalis media (ex. pudenda externa, ex. iliaca interna)

A. rectalis caudalis (ex. iliaca interna, ex. pudenda externa, ex. a. perinealis ventralis)