

# General introduction

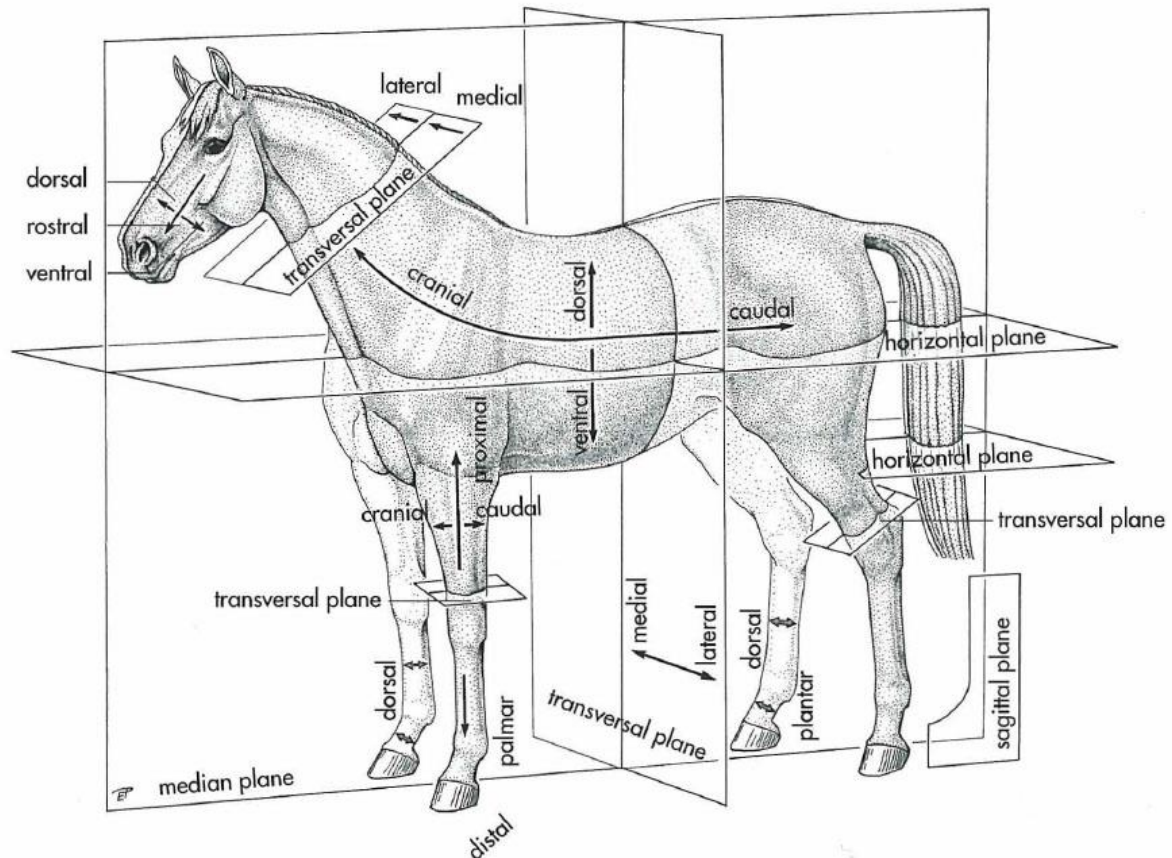


Anatomy is the branch of morphology dealing with the form, structure, topography and the functional interaction of the tissues and organs that compose the body.

ÁTE Anatómiai és Szövetani Tanszék

## I. Planes and directions:

Term	Meaning	Term	Meaning
<i>median plane</i>	virtual plane dividing the body in two equal part	<i>distal</i>	away from the trunk
<i>paramedian plane</i>	any plane parallel and located near to the median plane	<i>palmar</i>	towards the palm of the hand (forelimb, distal from carpus only)
<i>sagittal plane</i>	any plane parallel and located distant to the median plane	<i>plantar</i>	towards the sole of the foot (hind limb, distal from tarsus only)
<i>horizontal plane</i>	any plane parallel to the dorsal surface	<i>axial</i>	towards the axis of the digits
<i>transverse plane</i>	any plane perpendicular to the long axis	<i>abaxial</i>	away from the axis of the digits
<i>cranial</i>	towards the head	<i>external</i>	located outside
<i>rostral</i>	towards the nasal apex (on the head)	<i>internal</i>	located inside
<i>caudal</i>	towards the tail	<i>superficialis</i>	located near the surface
<i>dorsal</i>	towards the back; towards the palm of the distal limb	<i>profundus</i>	located in the depth
<i>ventral</i>	towards the belly	<i>temporal</i>	towards the temporal bone (on the head)
<i>medial</i>	towards the centre	<i>nasal</i>	towards the nose (on the head)
<i>lateral</i>	towards the side	<i>superior</i>	above
<i>median</i>	in the middle	<i>inferior</i>	below
<i>proximal</i>	towards the trunk	<i>oral</i>	towards the mouth (on the head)



## II. Species and abbreviations:

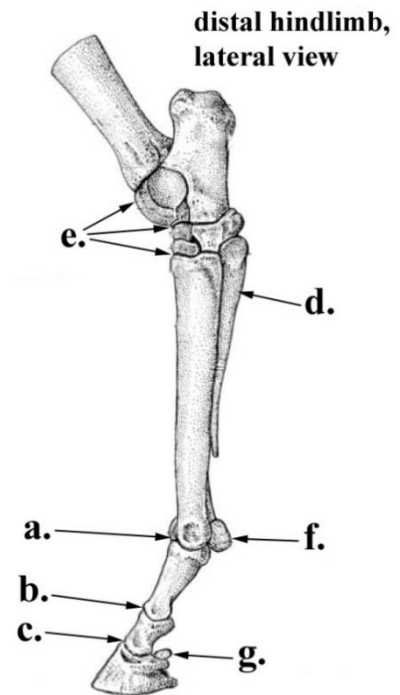
Species	Abbreviation	Name
<i>Ungulata</i>	Un	ungulates
<i>Equus caballus</i>	eq	horse
<i>Sus scrofa</i>	su	swine/pig
<i>Ruminant</i>	Ru	ruminants
<i>Bos taurus</i>	bo	cattle/bovine
<i>Ovis aries</i>	ov	sheep
<i>Capra hircus</i>	cap	goat
<i>Carnivora</i>	Car	carnivores
<i>Canis familiaris</i>	ca	dog
<i>Felis catus</i>	fe	cat

## III. General terms:

- Adeps, adipis – fat
- Ala – wing
- Albus, Albicans – white, whitish
- Angulus – angle
- Anulus – ring
- Apertura – opening
- Asper – rough
- Bicornis – with two horns
- Brevis – short
- Caecus – blind
- Cavus, cavum – hollow, cavity
- Cephalus, caput – head
- Coccyx – tail
- Communis – common
- Corniculatus – like a small horn
- Corpus – body
- Costa – rib
- Coxa – hip
- Cribrosus – perforated
- Crista – sharp ridge, crest
- Cruciatus – crossed
- Durus, durum – hard
- Eminentia – elevation
- Flavus – yellow
- Foramen – opening
- Fossa – depression, pit
- Fovae – small pit, little depression
- Frons, frontis – forehead
- Genu - knee
- Gracilis – slender
- Hamatus – hamate, hook
- Impar – unpaired
- Incisura – notch
- Labium – lip
- Lacrima – tear
- Latissimus – broadest
- Liber – free
- Longissimus – longest
- Longus – long
- Lunatus – half-moon shaped
- Magnus – great, large
- Major – larger, greater
- Manus – hand
- Margo – margin, borderline
- Mentum – chin
- Minor – small
- Os, oris – mouth
- Parvus – small
- Pecten – comb
- Pes, pedis – foot
- Petra, petrosus – rock
- Piriform – pear-shaped
- Pisiform – pea-shaped
- Pterygoid – wing
- Rectus – straight
- Rhinos – nose
- Rotundus – round
- Saliva – spit, spittle
- Sinus – excavation
- Spina – thorn, spine
- Sulcus – groove
- Teres – round
- Tuber – round big eminence
- Tuberculum – round small eminence
- Tuberositas – round tiny eminence
- Tympanum – drum
- Umbilicus – navel
- Uncinatus – hook shaped

#### IV. Special expressions:

- a. Fetlock joint – between the metacarpus/metatarsus and the proximal phalanx
- b. Pastern joint – between the proximal and the middle phalanx
- c. Coffin joint – between the middle and the distal phalanx
- d. Splint bones – II. and IV. metacarpal/metatarsal bones
- e. Hock joint – tarsal joint
- f. Proximal sesamoid bones
- g. Navicular bone – distal sesamoid bone
- h. Stifle joint – knee joint (not on the picture)
- i. Carpal joint – wrist joint (not on the picture)



#### V. Regions:

##### a. face and head:

1. regio frontalis
2. regio occipitalis
3. regio parietalis
4. regio temporalis
5. regio nasalis
6. regio oralis
7. regio mentalis
8. regio orbitalis
9. regio zygomatica
10. regio massaterica
11. regio mandibularis
12. regio maxillaris

##### b. neck:

13. regio colli dorsalis
14. regio colli lateralis
15. regio colli ventralis
16. sulcus jugularis
17. regio prescapularis

##### c. trunk:

18. regio sternalis
19. regio scapularis

20. regio costalis

21. arcus costalis

22. regio interscapularis

23. regio abdominalis cranialis

24. regio abdominalis media

25. regio abdominalis caudalis

26. regio umbilicalis

27. regio inguinalis

28. regio lumbalis

29. fossa paralumbalis

30. regio sacralis

31. regio glutea

32. regio tuberis coxae

33. regio tuberis ischiadici

34. regio caudalis

##### d. forelimb:

35. regio articulationis humeri

36. regio brachii

37. regio cubiti

38. regio olecrani

39. regio tricipitalis

40. regio antebrachii

41. regio carpi

42. regio metacarpi

43. regio metacarpophalangea

44. regio compedis

45. regio coronalis

46. regio ungulae

##### e. hindlimb:

47. regio articulationis coxae

48. regio trochanterica

49. regio femoris

50. regio genus

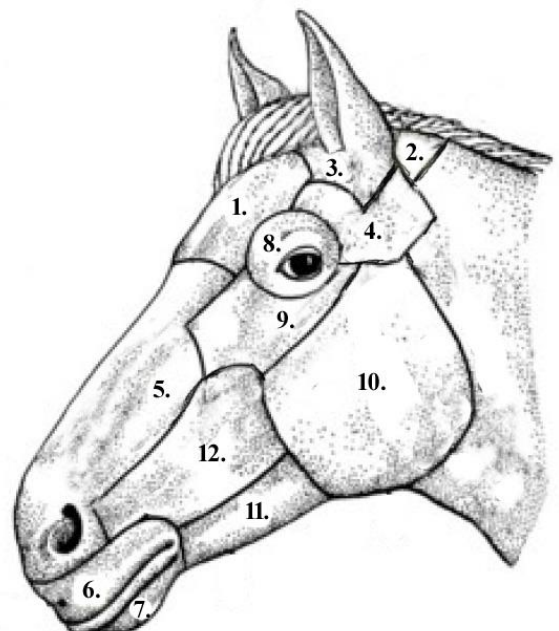
51. regio poplitea

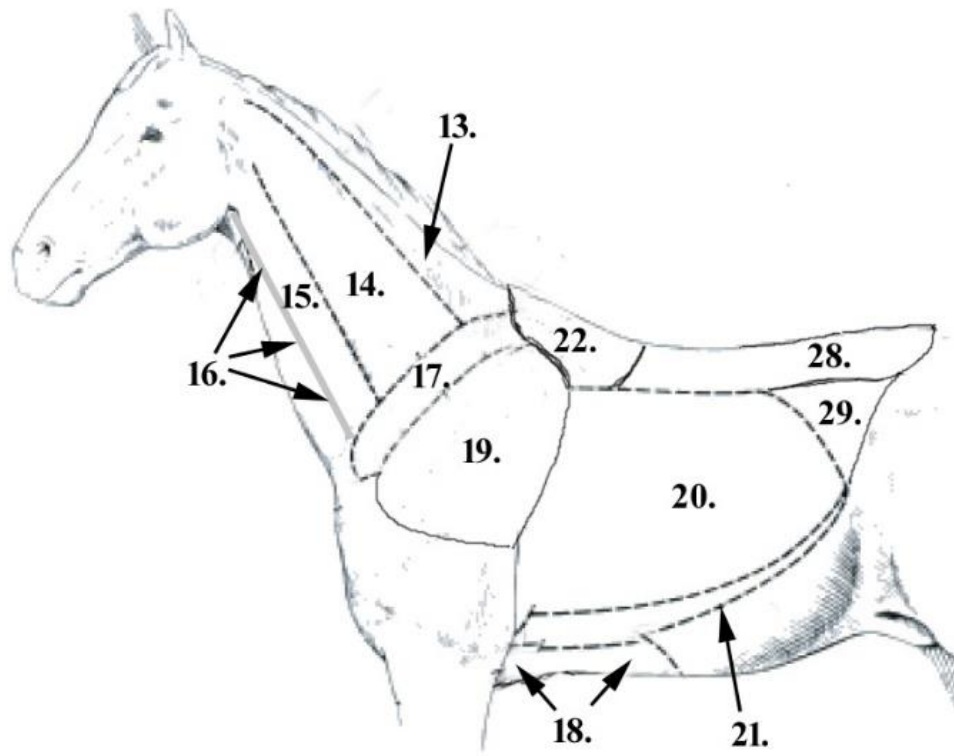
52. regio cruris

53. regio tarsi

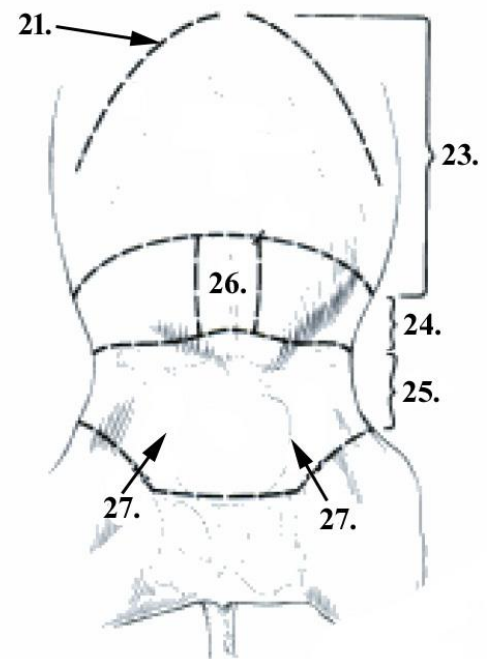
54. regio metatarsi

55. regio metatarsophalangea





Ventral view, cran. ↑



Lateral view, caud. →

