

CA

A. ARTERIA SUBCLAVIA

- b. A. vertebralis
- c. Truncus costocervicalis
 - d. A. scapularis dorsalis
 - e. A. cervicalis profunda
 - f. A. vertebralis thoracica
- g. A. thoracica interna
- h. A. cervicalis superficialis

1. ARTERIA AXILLARIS

- 2. A. thoracica externa
- 3. A. thoracica lateralis
- 4. A. subscapularis
 - 5. A. circumflexa humeri caudalis
 - 6. A. collateralis radialis
 - 7. A. thoracodorsalis
 - 8. A. circumflexa scapulae
- 9. A. circumflexa humeri cranialis

10. A. BRACHIALIS

- 11. A. profunda brachii
- 12. A. bicipitalis
- 13. A. collateralis ulnaris
 - 14. Rete articulare cubiti
- 15. A. brachialis superficialis
- 16. A. antebrachialis superficialis cranialis
 - 17. Ramus medialis
 - 18. A. digitalis dorsalis communis I
 - 19. Ramus lateralis
 - 20. Aa. dig. dors. communes II–IV
 - 21. Aa. digitales dorsales propriae axiales et abaxiales
- 22. A. transversa cubiti
- 23. A. interossea communis

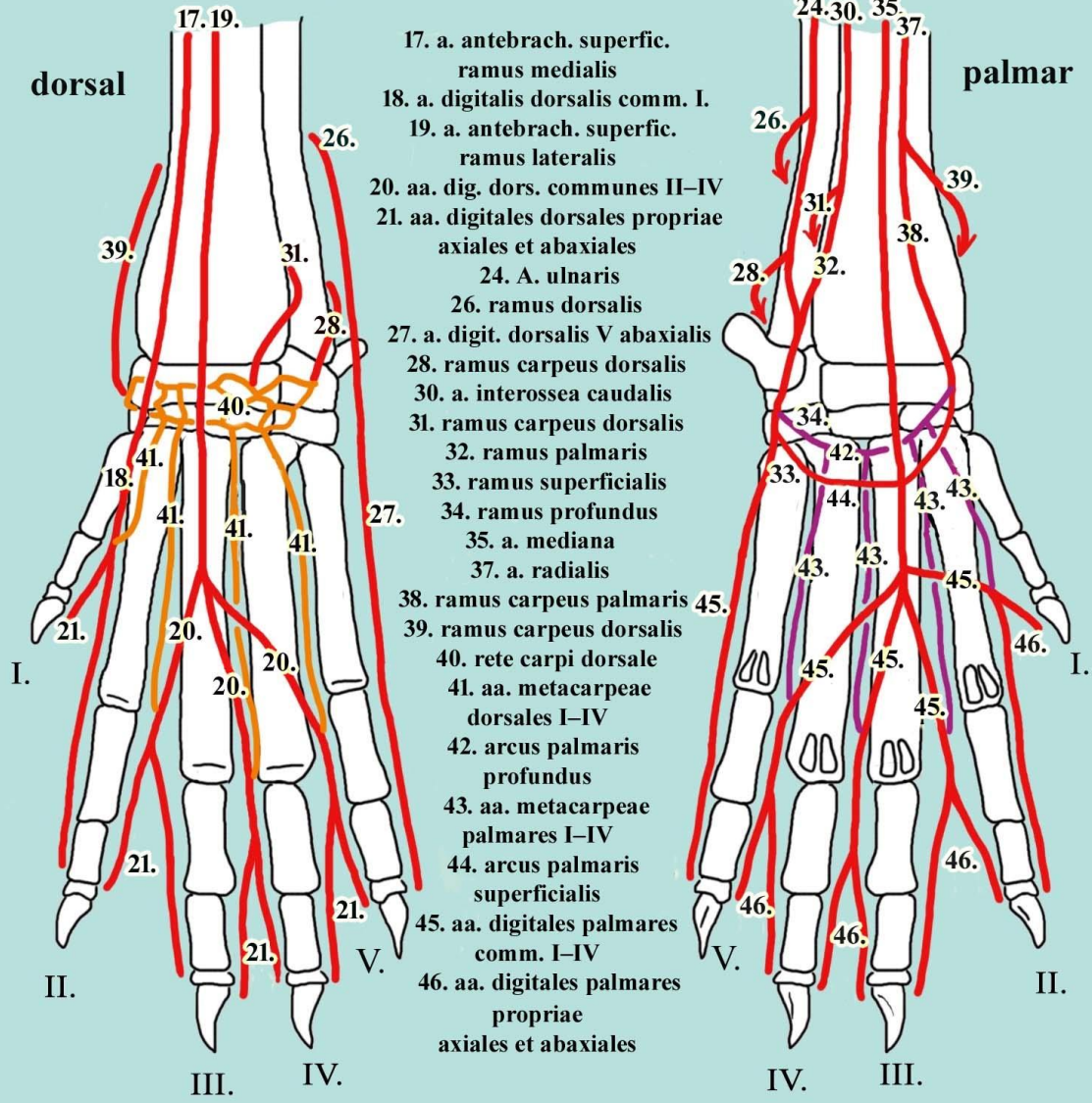
24. A. ulnaris

- 25. A. recurrens ulnaris
- 26. Ramus dorsalis
 - 27. A. digitalis dorsalis V abaxialis
- 28. Ramus carpeus dorsalis
- 29. A. interossea cranialis
- 30. A. interossea caudalis
 - 31. Ramus carpeus dorsalis
 - 32. Ramus palmaris
 - 33. Ramus superficialis
 - 34. Ramus profundus

35. A. MEDIANA

- 36. A. profunda antebrachii
- 37. A. radialis
 - 38. Ramus carpeus palmaris
 - 39. Ramus carpeus dorsalis
 - 40. Rete carpi dorsale
 - 41. Aa. metacarpeae dorsales I–IV
 - 42. Arcus palmaris profundus
 - 43. Aa. metacarpeae palmares I–IV
- 44. Arcus palmaris superficialis
 - 45. Aa. digitales palmares comm. I–IV
 - 46. Aa. digitales palmares propriae axiales et abaxiales

Forelimb vessels in ca



47. V. JUGULARIS EXTERNA

48. V. omobrachialis

49. V. cervicalis superficialis

50. V. cephalica

51. V. mediana cubiti - between v. cephalica and v. brachialis superficialis

52. V. cephalica accessoria

Ramus carpeus dorsalis

Vv. digitales dors. communes I–IV.

Vv. digitales dorsales propriae

V. digitalis dorsalis V abaxialis

V. AXILLARIS

V. subscapularis

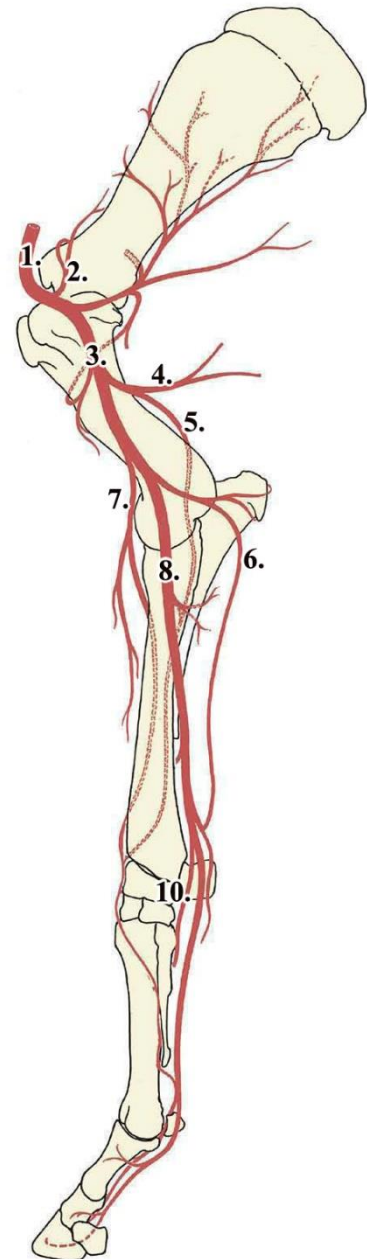
V. circumflexa humeri caudalis

53. V. axillobrachialis - between v. circumflexa humeri caudalis and v. cephalica



EQ

1. A. axillaris
 - A. thoracica externa
 2. **A. suprascapularis (in ca it's a branch of a. cervicalis superficialis)**
 - A. subscapularis
 - A. thoracodorsalis
 - A. circumflexa humeri caudalis
 - A. circumflexa scapulae
 3. A. brachialis
 - A. circumflexa humeri cranialis
 4. A. profunda brachii
 5. **A. collateralis radialis (in ca it's a branch of a. subscapularis)**
 - A. collateralis media
 - A. bicipitalis
 - A. brachialis superficialis is missing**
 6. A. collateralis ulnaris- **similar to a. ulnaris in ca**
 - Rete articulare cubiti
 7. A. transversa cubiti
 8. A. mediana
 - A. interossea communis
 - A. interossea cranialis
 - A. recurrens interossea
 - A. interossea caudalis
 - A. ulnaris is missing**
 - A. profunda antebrachii



(6. a. collateralis ulnaris

8. A. mediana)

9. **A. radialis proximalis**

Ramus carpeus dorsalis

Rete carpi dorsale

Aa. metacarpeae dors. II et III

Ramus carpeus palmaris

10. **A. radialis**

Ramus carpeus dorsalis

11. **Arcus palmaris profundus**

12. Aa. metacarpeae palmares II

13. Aa. metacarpeae palmares III

14. Ramus palmaris

15. Ramus superficialis

16. A. dig. palmaris comm. III (=lateral palmar artery)

17. Ramus profundus

18. **Arcus palmaris superficialis**

19. A. digitalis palmaris communis II (=medial palmar artery)

20. A. digitalis medialis

21. R. palmaris phalangis proximalis /R.dorsalis phalangis prox.

22. R.palmaris phalangis mediae /R.dorsalis phalangis mediae

R.tori digitalis- to the digital cushion, **A. coronalis-** along margo coronalis

23. R.dorsalis phalangis distalis- running inside sulcus parietalis

24. Arcus terminalis

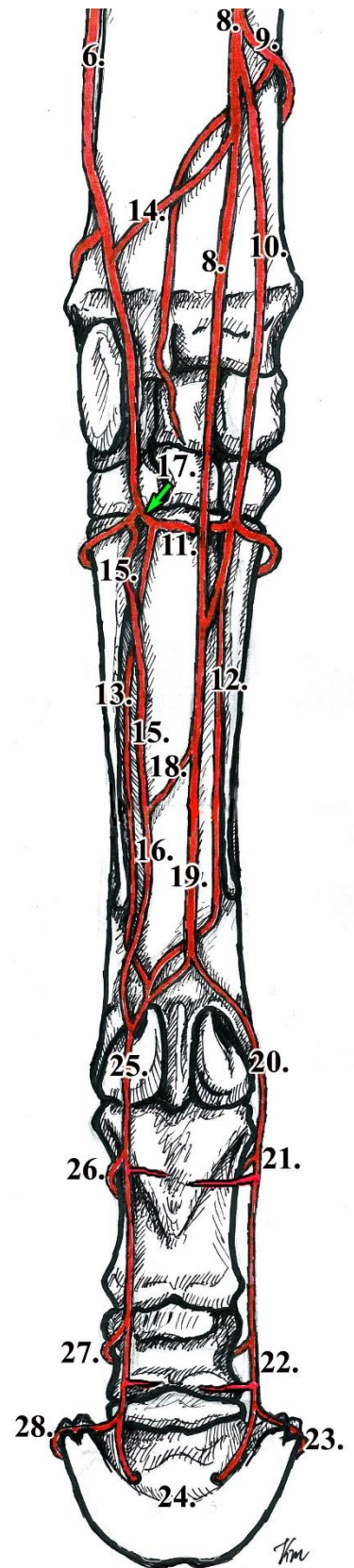
25. A. digitalis lateralis

26. R.palmaris phalangis proximalis /R.dorsalis phalangis prox.

27. R.palmaris phalangis mediae /R.dorsalis phalangis mediae

R.tori digitalis, A. coronalis, A. marginis solearis

28. R.dorsalis phalangis distalis



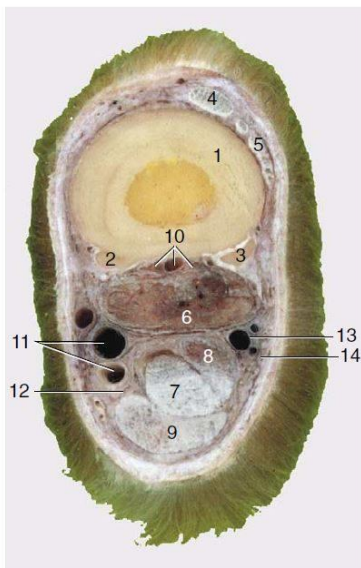
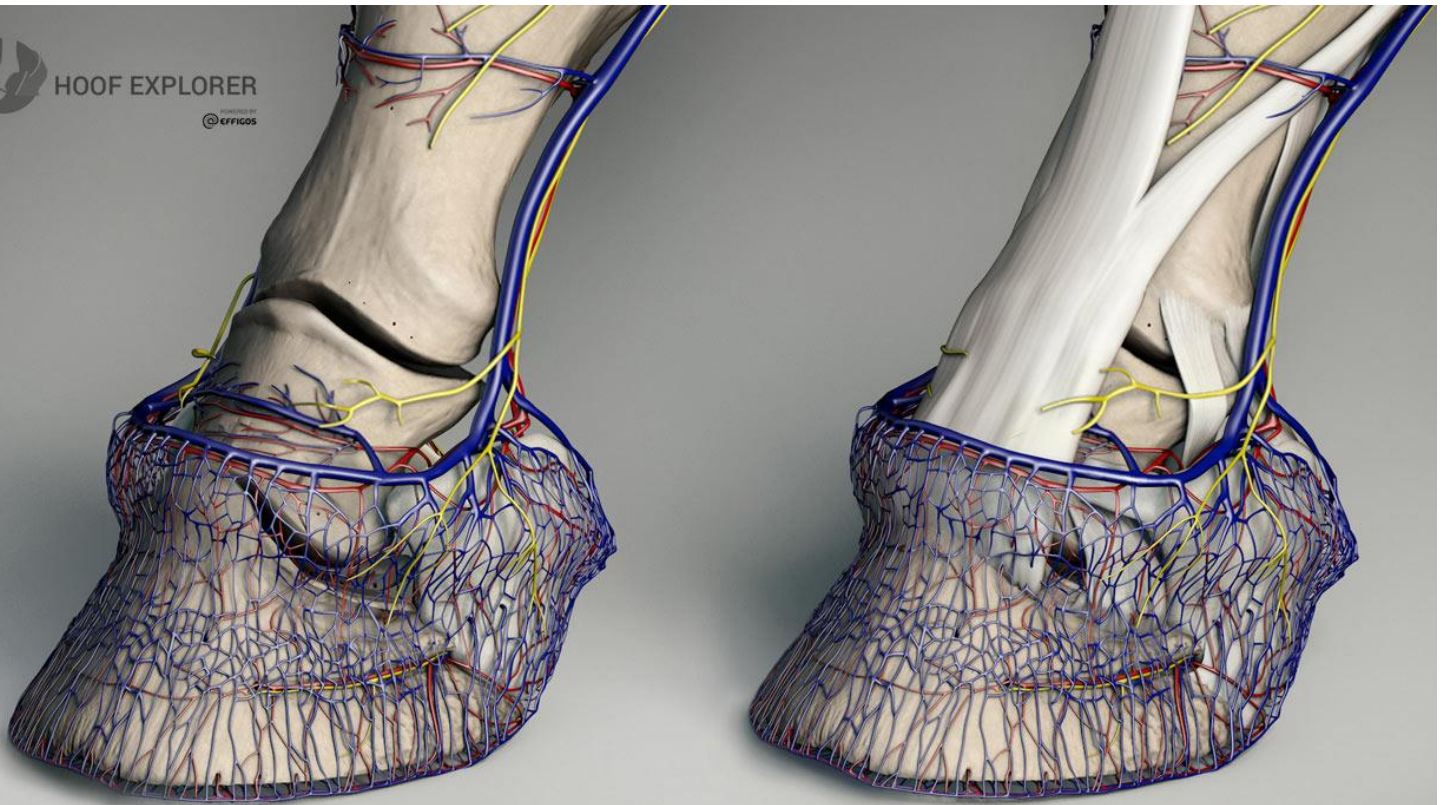


Figure 23–45 Transverse section of the middle of the right metacarpus. *1, 2, 3*, Large and small metacarpal bones; *4*, common digital extensor; *5*, lateral digital extensor; *6*, interosseus; *7*, deep digital flexor; *8*, accessory (check) ligament; *9*, superficial digital flexor; *10*, palmar metacarpal vessels and nerves; *11*, medial palmar artery and vein; *12*, medial palmar nerve; *13*, lateral palmar artery; *14*, lateral palmar nerve.

